



## Växtpatologi BI1044, 10301.1011

15 Hp  
Studietakt = 100%  
Nivå och djup = Avancerad  
Kursledare = Dan Funck Jensen

### Värderingsresultat

---

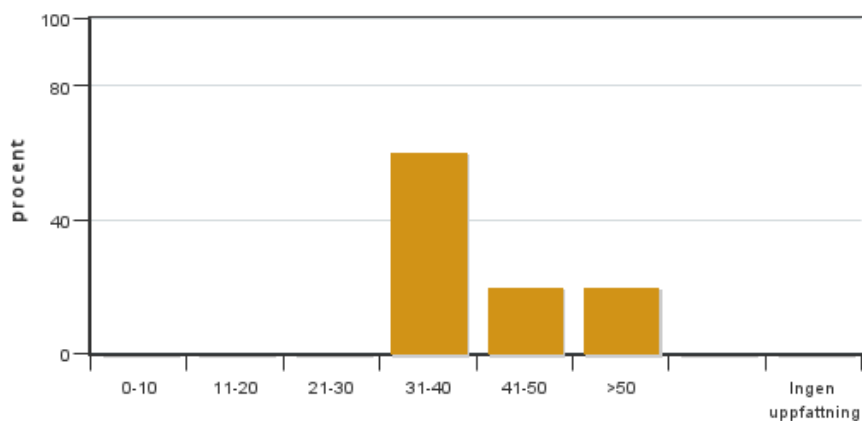
Värderingsperiod: 2010-10-29 - 2010-11-12

Antal svar 5  
Studentantal 6  
Svarsfrekvens 83 %

### Obligatoriska standardfrågor

---

1. Hur många timmar per vecka har du i genomsnitt lagt ner på kursen (inklusive schemalagd tid)?

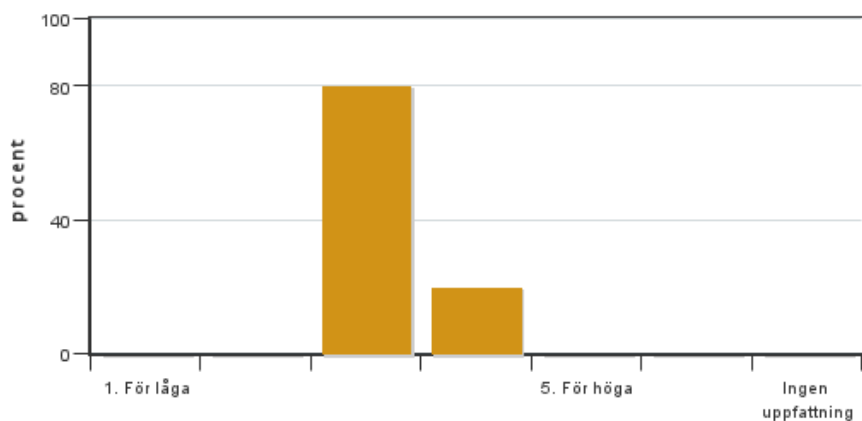


Antal svar: 5  
Medel: 41,0  
Median: 31-40

0-10: 0  
11-20: 0  
21-30: 0  
31-40: 3  
41-50: 1  
>50: 1

Har ingen uppfattning: 0

2. Vad anser du om dina förkunskaper inför kursen?

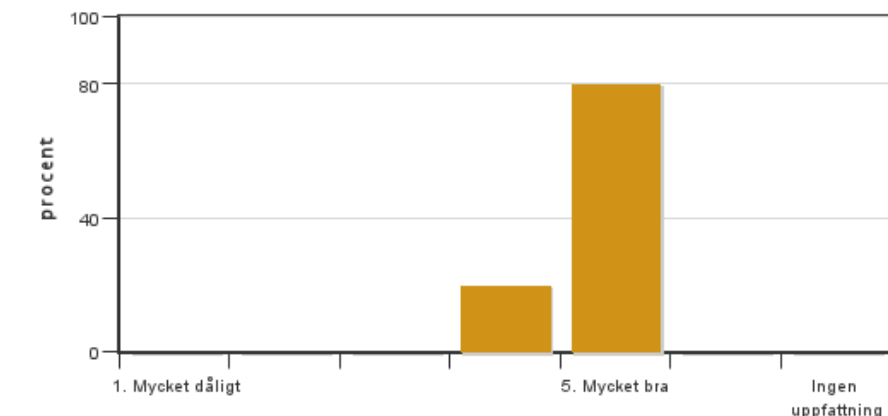


Antal svar: 5  
Medel: 3,2  
Median: 3

1: 0  
2: 0  
3: 4  
4: 1  
5: 0

Har ingen uppfattning: 0

**3. Hur har informationen/administrationen i samband med kursen fungerat?**

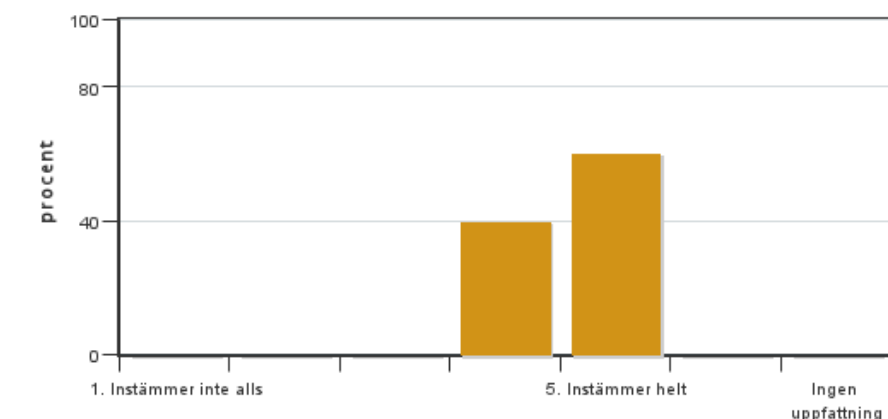


Antal svar: 5  
Medel: 4,8  
Median: 5

1: 0  
2: 0  
3: 0  
4: 1  
5: 4

Har ingen uppfattning: 0

**4. Jag anser att helhetsintrycket av kursen är mycket gott**

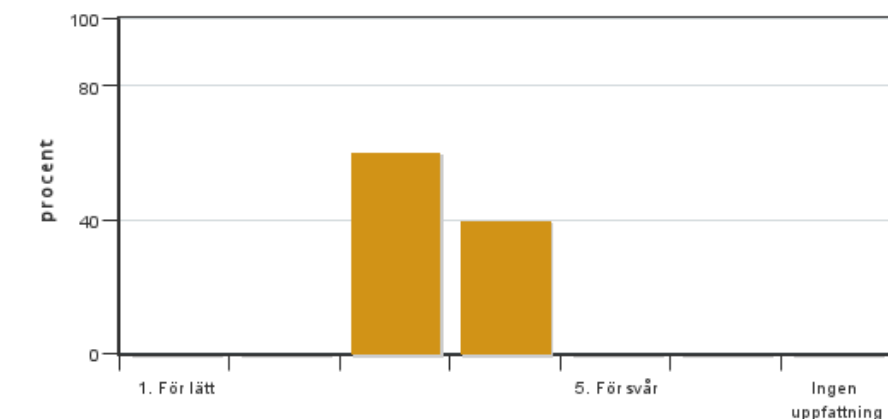


Antal svar: 5  
Medel: 4,6  
Median: 5

1: 0  
2: 0  
3: 0  
4: 2  
5: 3

Har ingen uppfattning: 0

**5. Jag anser att kursens svårighetsgrad har varit**

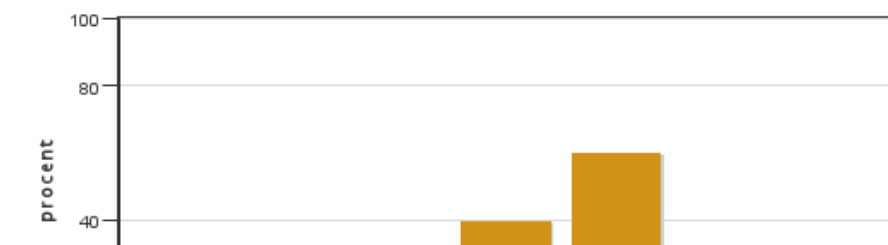


Antal svar: 5  
Medel: 3,4  
Median: 3

1: 0  
2: 0  
3: 3  
4: 2  
5: 0

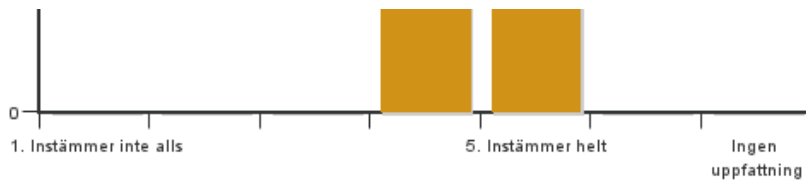
Har ingen uppfattning: 0

**6. Jag anser att kursen har behandlat alla lärandemål som anges i kursplanen. Om Du markerar (1), (2), (3), eller (4) ange vilket/vilka lärandemål som blivit otillräckligt behandlade.**



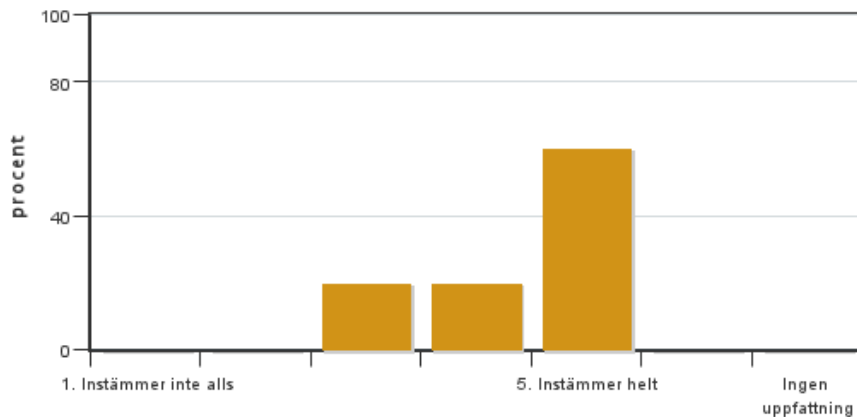
Antal svar: 5  
Medel: 4,6  
Median: 5

1: 0  
2: 0  
3: 0  
4: 2



5: 3  
Har ingen uppfattning: 0

## 7. Betygskriterierna var tydligt formulerade och enkla att förstå



Antal svar: 5  
Medel: 4,4  
Median: 5

1: 0  
2: 0  
3: 1  
4: 1  
5: 3  
Har ingen uppfattning: 0

## Kursledarens kommentarer

5 out of the 6 students filled in the evaluation form on the net. In addition to this we made a course evaluation where we discussed the course. My comments to the net-evaluation are that the course in general gets a very good evaluation. Two of the students did not start before 2-3 weeks after course start as they did not arrive in Sweden before and they might have had a heavy work load in order to keep up with the expectations. From the oral evaluation we could see that on a certain time of the course there was a too heavy load of reading material for the theoretical exercises and we will make sure this will be adjusted for the next time the course is running. From the oral evaluation there was a suggestion for having cases with specific diseases as theoretical exercises and also that there would be more time for molecular diagnostic methods.

We fully agree to the comments that we should put more effort into some of the lab exercises although some are functioning quite well.

A comment to statement 6 (which scored grade 5) was "got new fresh ideas about plant pathology". I think this reflects our intention with the course really to address the newest and state of the art in plant pathology. Integrated pest management is addressed in the course and this theme will be expanded next year.

The students ask for more field trips and visits to industry - we will consider that but we had the field trips up to the time when all crops were harvested but we might organize a visit to industry.

At course start the students were very different when it comes to their basic competences in plant pathology. We tried to compensate for that - maybe not always successfully - by putting more effort into individual cases and group discussions in theoretical exercises which should give challenges for each student at his/her level of competences.

/Dan Funck Jensen

## Studentrepresentantens kommentarer

The coordination, arrangement and implementation of the course were of a high quality in which it helped students to acquire the best possible knowledge out of the program. The vast experience of instructors involved in every bit of the program with their respective research exposures and way of presentations had contributed significantly to address the background variation among students. The different approaches taken to cover the course syllabus through field excursion, scientific papers, presentation and poster assignments were made students to thoroughly study the subject from the implementation point of view. The laboratory activities were also complementary in understanding the application techniques but need to be upgraded to the best possible standards.

Nonetheless, it was suggested to even consider up-to-date ideas in plant pathology, researches and application of the science. It was also commented to include more visits to organizations that actively apply it.

Finally, the overall standard of the course were appreciated by the attendants.

---

Kontakta support: [support@slu.se](mailto:support@slu.se) - 018-67 6600