



## Ekologi för miljö och vatten BI1465, 10225.2526

5 Hp

Studietakt = 33%

Nivå och djup = Grund

Kursledare = Giulia Vico

### Värderingsresultat

---

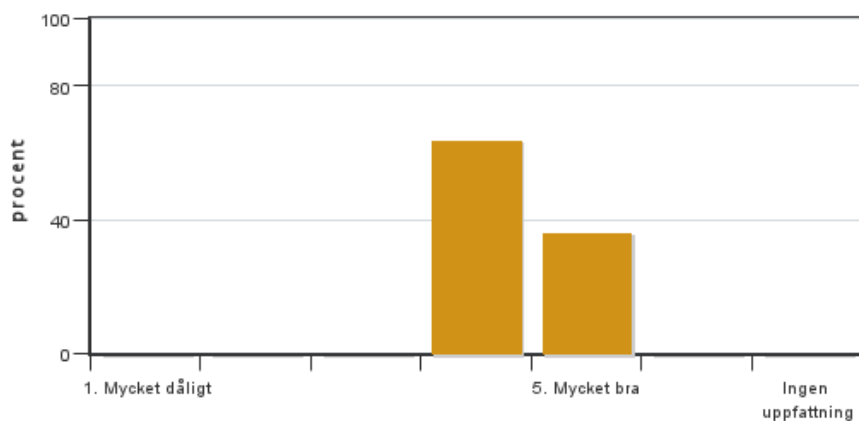
Värderingsperiod: 2025-10-26 - 2025-11-16

Antal svar 11  
Studentantal 49  
Svarsfrekvens 22 %

### Obligatoriska standardfrågor

---

#### 1. Mitt helhetsintryck av kursen är:

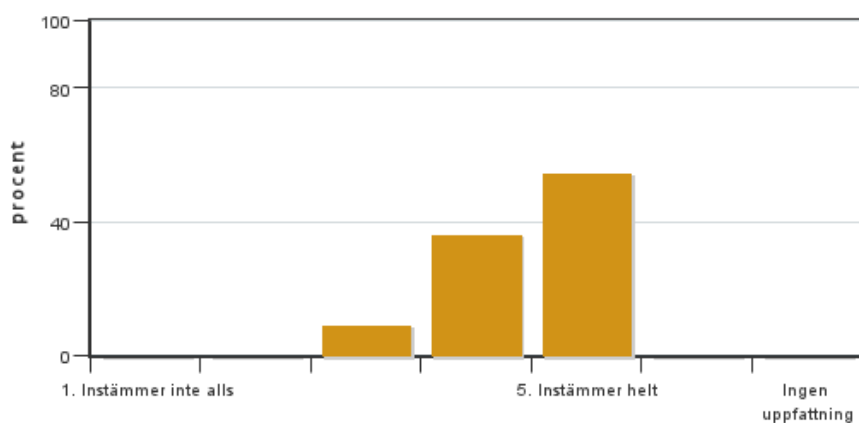


Antal svar: 11  
Medel: 4,4  
Median: 4

1: 0  
2: 0  
3: 0  
4: 7  
5: 4

Har ingen uppfattning: 0

#### 2. Jag anser att kursens innehåll hade en tydlig koppling till kursens lärandemål.

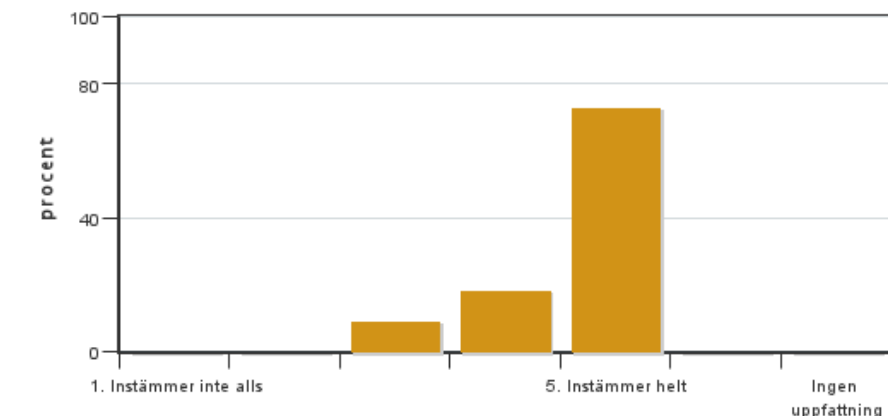


Antal svar: 11  
Medel: 4,5  
Median: 5

1: 0  
2: 0  
3: 1  
4: 4  
5: 6

Har ingen uppfattning: 0

**3. Mina förkunskaper var tillräckliga för att tillgodogöra mig kursen.**

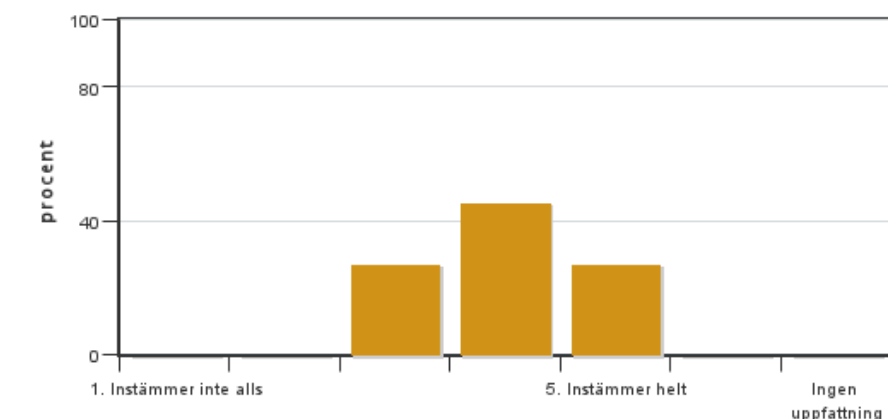


Antal svar: 11  
Medel: 4,6  
Median: 5

1: 0  
2: 0  
3: 1  
4: 2  
5: 8

Har ingen uppfattning: 0

**4. Jag anser att kursinformationen var lättillgänglig.**

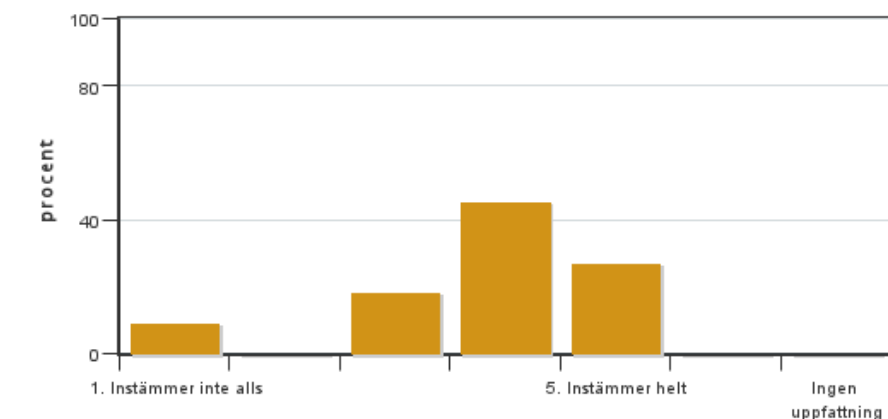


Antal svar: 11  
Medel: 4,0  
Median: 4

1: 0  
2: 0  
3: 3  
4: 5  
5: 3

Har ingen uppfattning: 0

**5. Kursens lärandemoment (föreläsningar, litteratur, övningar med mera) har stöttat mitt lärande.**

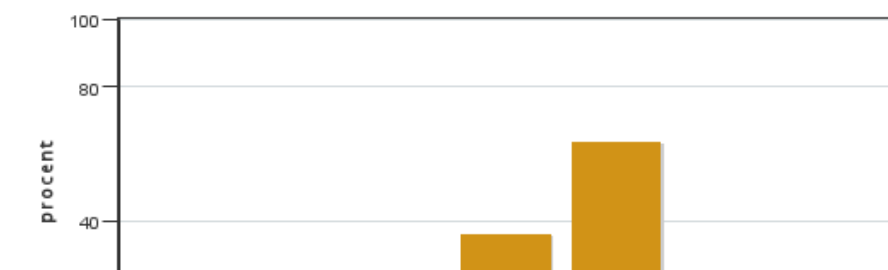


Antal svar: 11  
Medel: 3,8  
Median: 4

1: 1  
2: 0  
3: 2  
4: 5  
5: 3

Har ingen uppfattning: 0

**6. Jag anser att den sociala lärmiljön har varit inkluderande där olika tankar respekterades.**



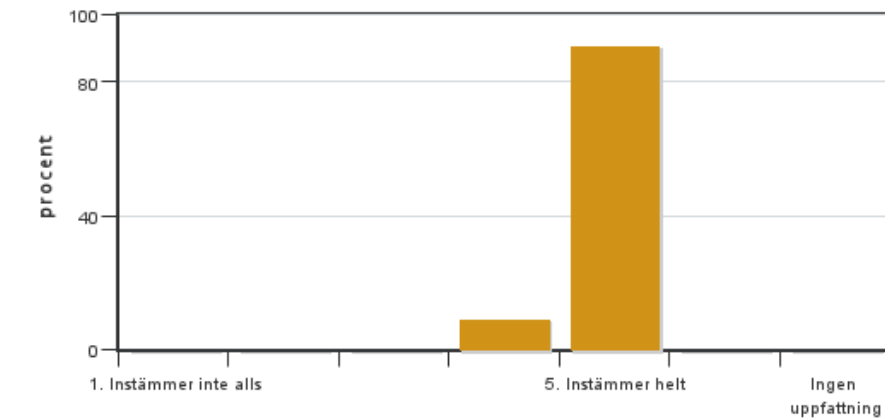
Antal svar: 11  
Medel: 4,6  
Median: 5

1: 0  
2: 0  
3: 0  
4: 4  
5: 7



Har ingen uppfattning: 0

**7. Jag anser att den fysiska lärmiljön (exempelvis lokaler och utrustning) var tillfredställande.**

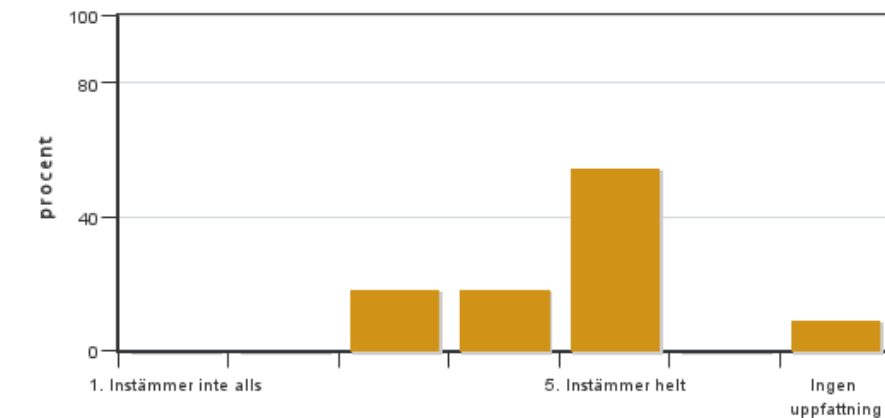


Antal svar: 11  
Medel: 4,9  
Median: 5

1: 0  
2: 0  
3: 0  
4: 1  
5: 10

Har ingen uppfattning: 0

**8. Examinationen/-erna gav mig möjlighet att visa vad jag lärt mig under kursen, se lärandemål.**

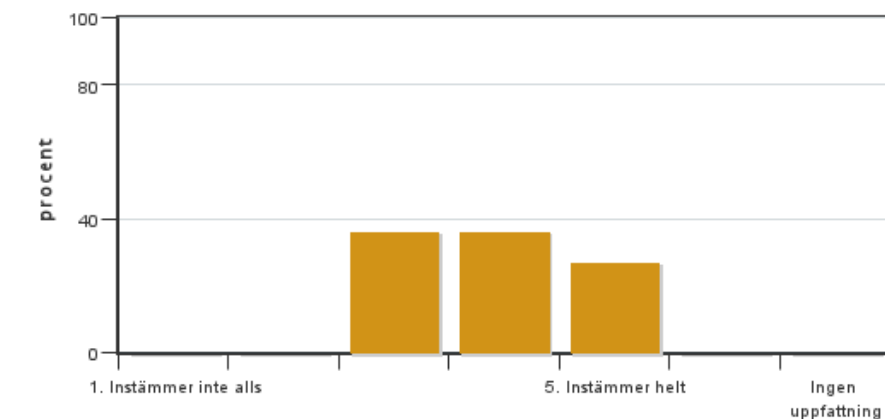


Antal svar: 11  
Medel: 4,4  
Median: 5

1: 0  
2: 0  
3: 2  
4: 2  
5: 6

Har ingen uppfattning: 1

**9. Jag anser att kursen har berört hållbar utveckling (miljömässig, social och/eller ekonomisk hållbarhet).**

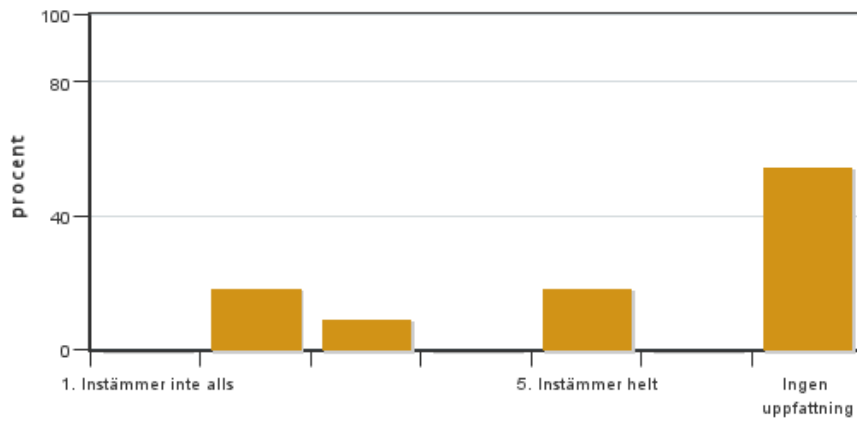


Antal svar: 11  
Medel: 3,9  
Median: 4

1: 0  
2: 0  
3: 4  
4: 4  
5: 3

Har ingen uppfattning: 0

**10. Jag anser att kursen har berört ett genus- och jämställdhetsperspektiv i innehåll och praktik (t. ex. perspektiv på ämnet, kurslitteratur, fördelning av taltid och förekomst av härskartekniker).**

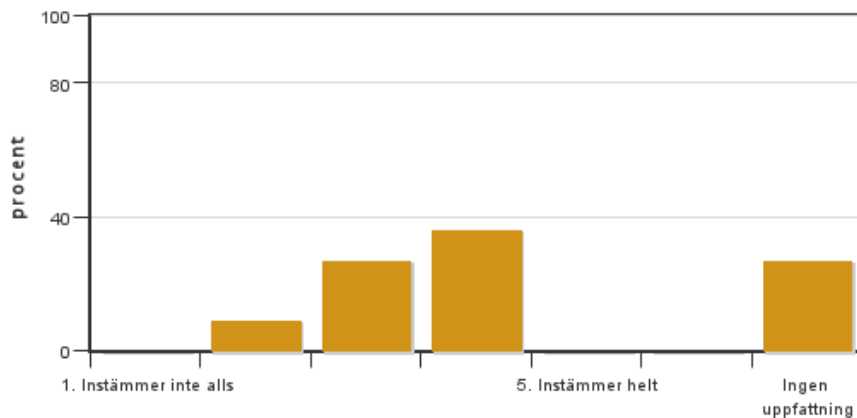


Antal svar: 11  
 Medel: 3,4  
 Median: 3

1: 0  
 2: 2  
 3: 1  
 4: 0  
 5: 2

Har ingen uppfattning: 6

**11. Jag anser att kursen har berört internationella perspektiv.**

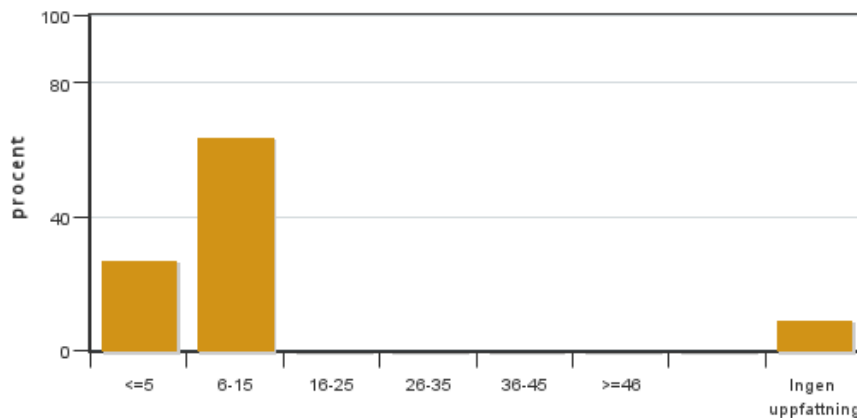


Antal svar: 11  
 Medel: 3,4  
 Median: 3

1: 0  
 2: 1  
 3: 3  
 4: 4  
 5: 0

Har ingen uppfattning: 3

**12. Jag har i genomsnitt lagt ... timmar per vecka på kursen (inklusive schemalagd tid).**



Antal svar: 11  
 Medel: 7,8  
 Median: 6-15

≤5: 3  
 6-15: 7  
 16-25: 0  
 26-35: 0  
 36-45: 0  
 ≥46: 0

Har ingen uppfattning: 1

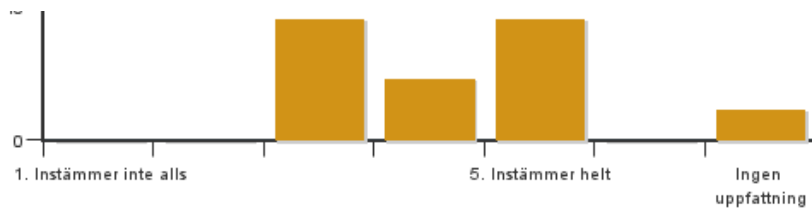
**Egna frågor**

**13. Delen av kursen som avhandlade system (näringskretslopp) var värdefull.**



Antal svar: 11  
 Medel: 4,0  
 Median: 4

1: 0  
 2: 0  
 3: 4

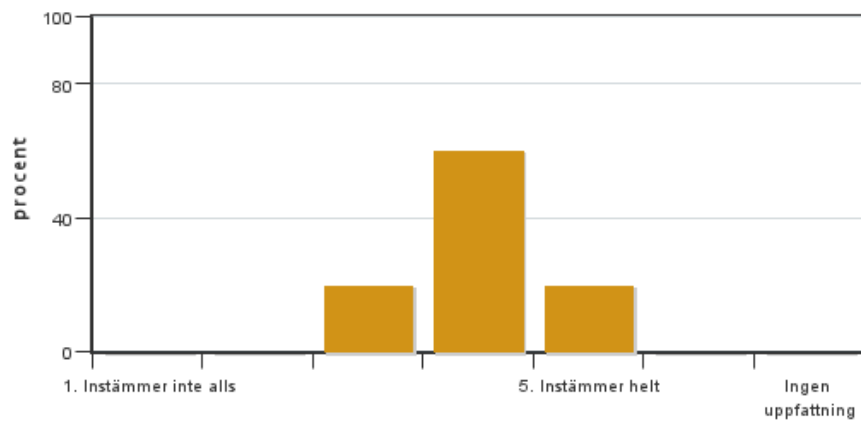


4: 2

5: 4

Har ingen uppfattning: 1

**14. Delen av kursen som avhandlade primärproduktion var värdefull.**



Antal svar: 10

Medel: 4,0

Median: 4

1: 0

2: 0

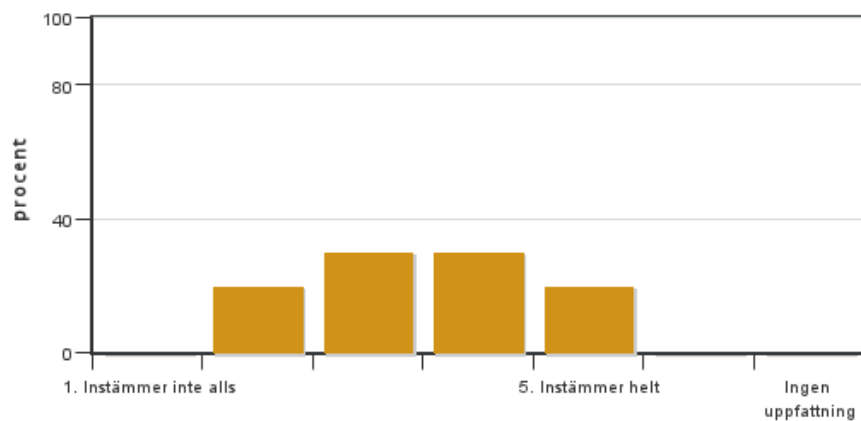
3: 2

4: 6

5: 2

Har ingen uppfattning: 0

**15. Delen av kursen som avhandlade energy var värdefull.**



Antal svar: 10

Medel: 3,5

Median: 3

1: 0

2: 2

3: 3

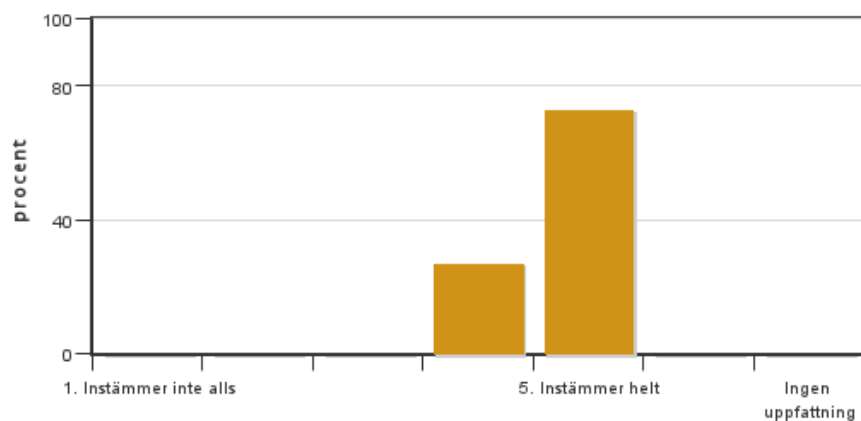
4: 3

5: 2

Har ingen uppfattning: 0

**16. Delen av kursen som avhandlade vatten var värdefull**

**16. Delen av kursen som avhandlade populationsekologi var värdefull.**



Antal svar: 11

Medel: 4,7

Median: 5

1: 0

2: 0

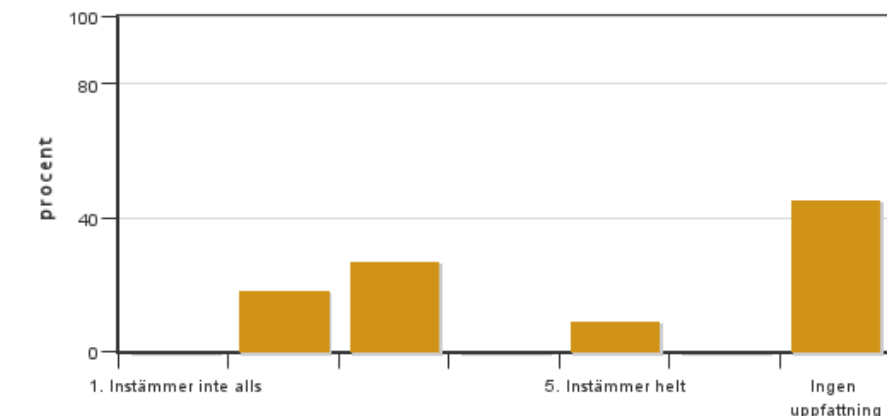
3: 0

4: 3

5: 8

Har ingen uppfattning: 0

### 17. Workshop 1 var värdefull.

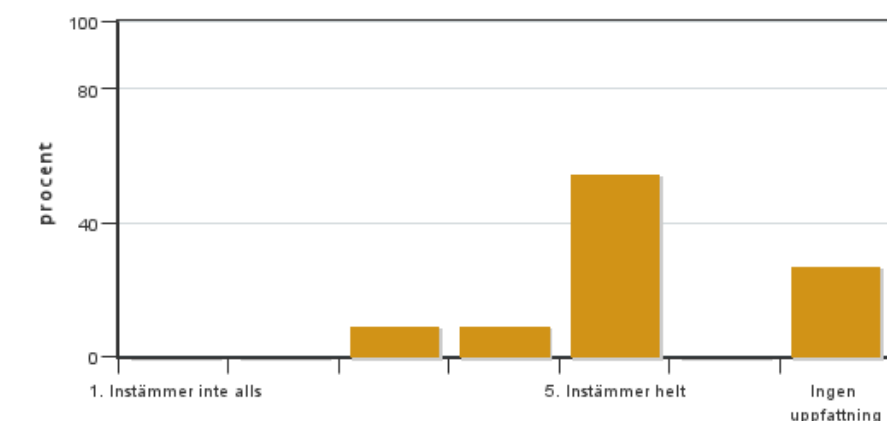


Antal svar: 11  
Medel: 3,0  
Median: 3

1: 0  
2: 2  
3: 3  
4: 0  
5: 1

Har ingen uppfattning: 5

### 18. Workshop 2 var värdefull.

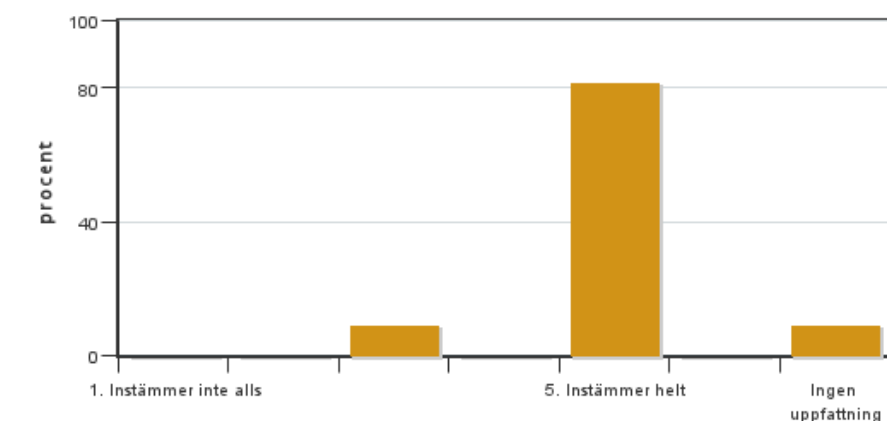


Antal svar: 11  
Medel: 4,6  
Median: 5

1: 0  
2: 0  
3: 1  
4: 1  
5: 6

Har ingen uppfattning: 3

### 19. Det är bra med en tenta för varje module



Antal svar: 11  
Medel: 4,8  
Median: 5

1: 0  
2: 0  
3: 1  
4: 0  
5: 9

Har ingen uppfattning: 1

## Kursledarens kommentarer

The course was by and large well received, with an average score of 4.4, and no score below 4, with comments appreciating the lectures and the workshops, particularly those relative to the second part of the course (population ecology). Workshop 1 was perceived as not equally well-linked to the exam: we will further clarify the linkages. We will also critically revise the parts that have received relatively lower grades, although we lack specific comments to guide us.

The fact that each part of the course has its own exam was very much appreciated, as it allowed the students to

focus on one part at the time. However, some students were not fully satisfied by the number of questions being reduced with respect to previous year – a change implemented to address a comment received in 2024. We will consider how to move forwards in the light of these contrasting comments.

Some comments suggest we need to improve the way we communicate the linkages between the course content and sustainability. A suggestion in this direction is to discuss the effects of climate change on populations (climate change is instead explicitly considered in the ecosystem ecology part, also via an ad hoc lecture). We note that several examples are included in the textbook, but we will consider to better bring this into the lectures too. The students also note the course falls short regarding equal opportunities. Indeed, this perspective is not present in the lectures, as inherently the case in the topic. However, despite improvements this year, we recognize there remains a gender imbalance among the teachers – a result of teacher availability.

Under the logistic point of view, students note that it takes time to reach SLU, making attendance difficult particularly early in the morning. They also note that this course running in parallel to other two “heavy” courses reduces their ability to engage. This in spite of lectures and other activities being designed for the most effective learning, and a compact schedule at SLU, exactly in consideration of the students’ heavy schedule. We will remind the students that attendance is the most time effective way to work on this course. It appears instead unpractical to push the starting time later in the morning, without adding days at SLU.

Students note information regarding the course was mostly sufficient and properly communicated. We appreciate this. However, they experienced some difficulties in knowing the location of the exam and of the course evaluation. We will make sure these are communicated through Canvas/Studium, while continuing with the same regime of announcements relative to the different parts of the course.

In closing, we note that only 11 students out of 49 filled the course evaluation, despite two reminders, raising questions about its representativeness.

## **Studentrepresentantens kommentarer**

Studentrepresentanten har inte lämnat några kommentarer

---

Kontakta support: [support@slu.se](mailto:support@slu.se) - 018-67 6600