



## Marklära, hydrologi och meteorologi SG0211, 40022.2122

7.5 Hp

Studietakt = 100%

Nivå och djup = Grund

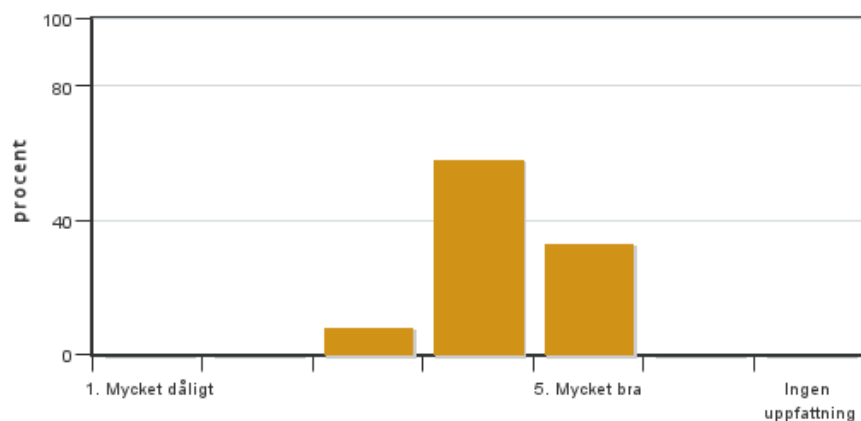
### Värderingsresultat

Värderingsperiod: 2022-04-24 - 2022-05-15

Antal svar	12
Studentantal	31
Svarsfrekvens	38 %

### Obligatoriska standardfrågor

#### 1. Mitt helhetsintryck av kursen är:

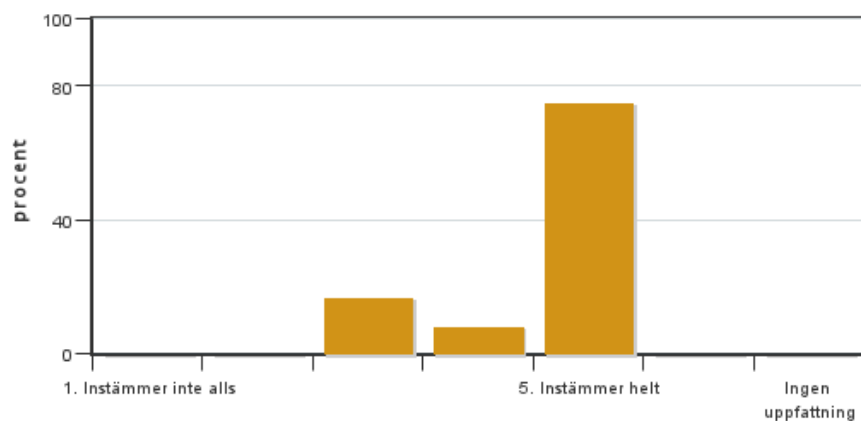


Antal svar: 12  
Medel: 4,3  
Median: 4

1: 0  
2: 0  
3: 1  
4: 7  
5: 4

Har ingen uppfattning: 0

#### 2. Jag anser att kursens innehåll hade en tydlig koppling till kursens lärandemål.

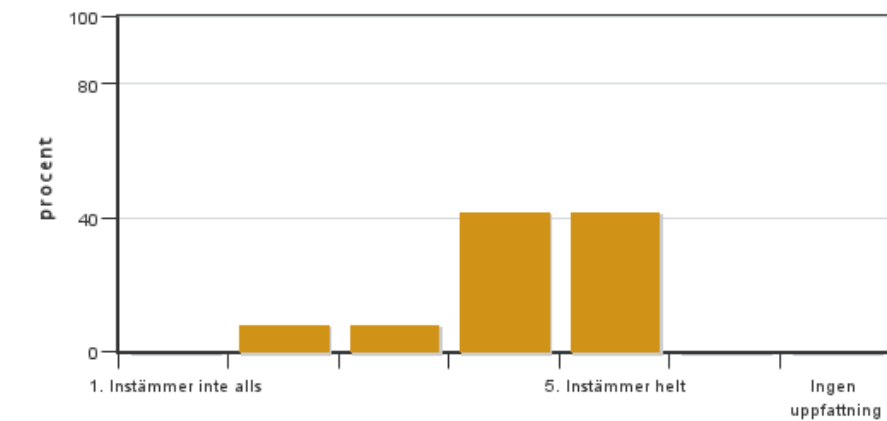


Antal svar: 12  
Medel: 4,6  
Median: 5

1: 0  
2: 0  
3: 2  
4: 1  
5: 9

Har ingen uppfattning: 0

#### 3. Mina förkunskaper var tillräckliga för att tillgodogöra mig kursen.

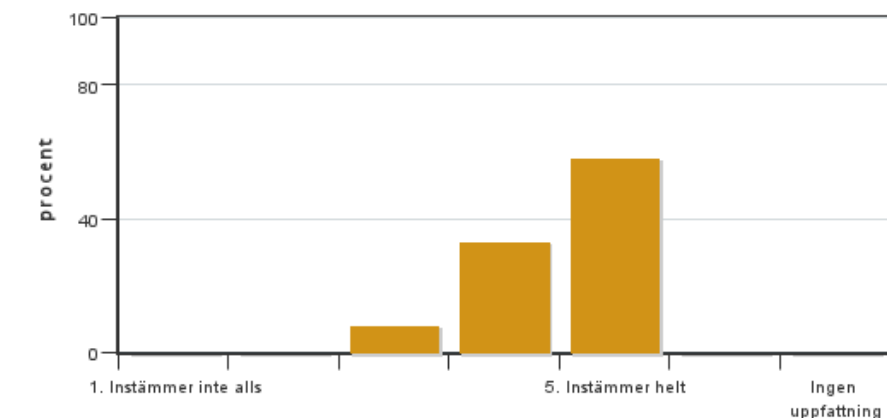


Antal svar: 12  
Medel: 4,2  
Median: 4

1: 0  
2: 1  
3: 1  
4: 5  
5: 5

Har ingen uppfattning: 0

#### 4. Jag anser att kursinformationen var lättillgänglig.

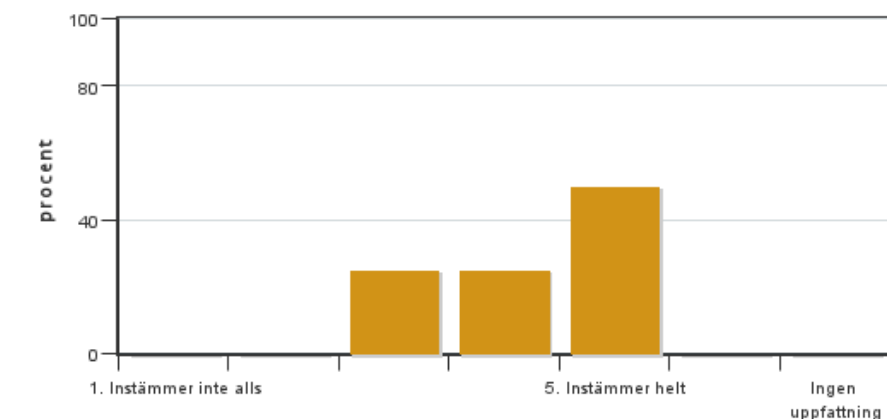


Antal svar: 12  
Medel: 4,5  
Median: 5

1: 0  
2: 0  
3: 1  
4: 4  
5: 7

Har ingen uppfattning: 0

#### 5. Kursens lärandemoment (föreläsningar, litteratur, övningar med mera) har stöttat mitt lärande.

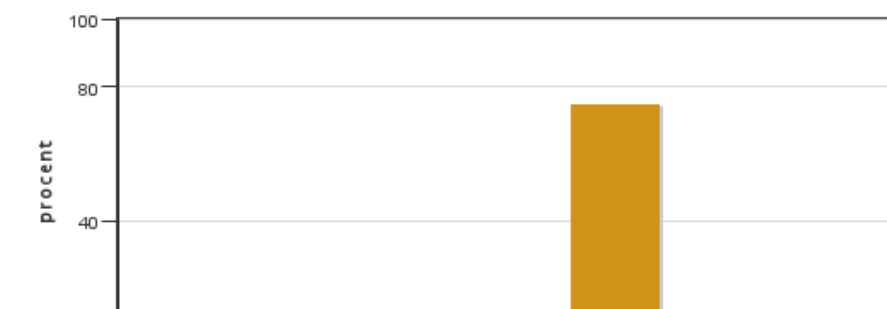


Antal svar: 12  
Medel: 4,3  
Median: 4

1: 0  
2: 0  
3: 3  
4: 3  
5: 6

Har ingen uppfattning: 0

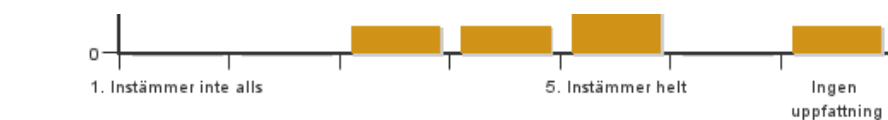
#### 6. Jag anser att den sociala lärmiljön har varit inkluderande där olika tankar respekterades.



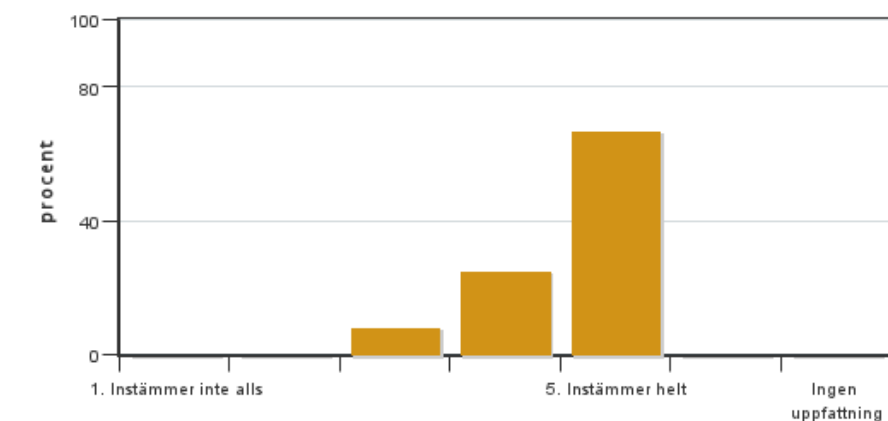
Antal svar: 12  
Medel: 4,7  
Median: 5

1: 0  
2: 0  
3: 1  
4: 1  
5: 9

Har ingen uppfattning: 1



**7. Jag anser att den fysiska lärmiljön (exempelvis lokaler och utrustning) var tillfredställande.**

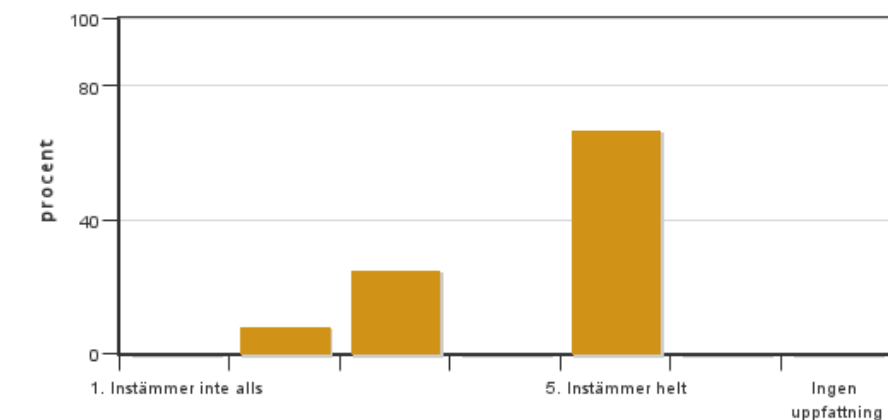


Antal svar: 12  
Medel: 4,6  
Median: 5

1: 0  
2: 0  
3: 1  
4: 3  
5: 8

Har ingen uppfattning: 0

**8. Examinationen/-erna gav mig möjlighet att visa vad jag lärt mig under kursen, se lärandemål.**

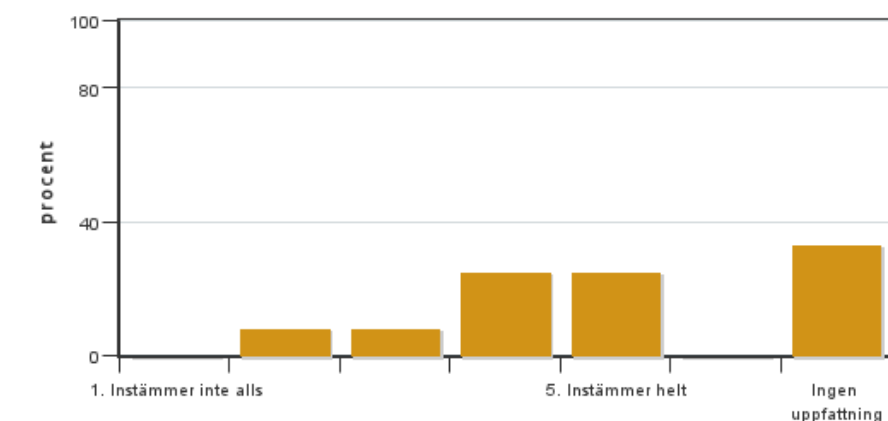


Antal svar: 12  
Medel: 4,3  
Median: 5

1: 0  
2: 1  
3: 3  
4: 0  
5: 8

Har ingen uppfattning: 0

**9. Jag anser att kursen har berört hållbar utveckling (miljömässig, social och/eller ekonomisk hållbarhet).**

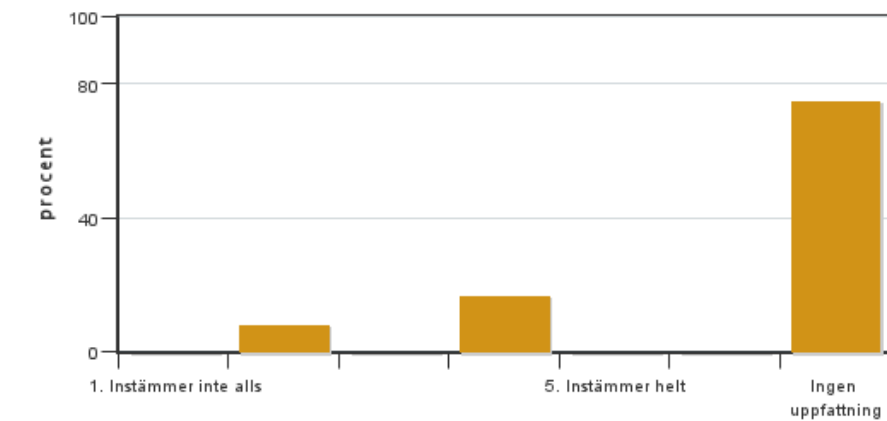


Antal svar: 12  
Medel: 4,0  
Median: 4

1: 0  
2: 1  
3: 1  
4: 3  
5: 3

Har ingen uppfattning: 4

**10. Jag anser att kursen har berört ett genus- och jämställdhetsperspektiv i innehåll och praktik (t. ex. perspektiv på ämnet, kurslitteratur, fördelning av taltid och förekomst av härskartekniker).**

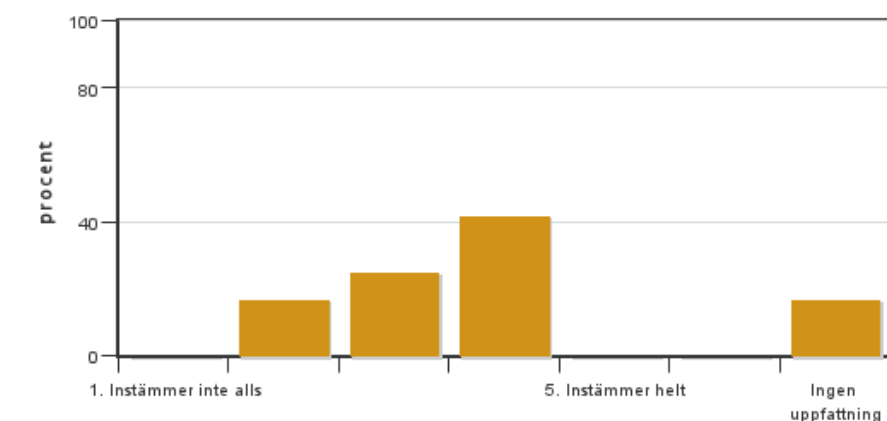


Antal svar: 12  
Medel: 3,3  
Median: 4

1: 0  
2: 1  
3: 0  
4: 2  
5: 0

Har ingen uppfattning: 9

#### 11. Jag anser att kursen har berört internationella perspektiv.

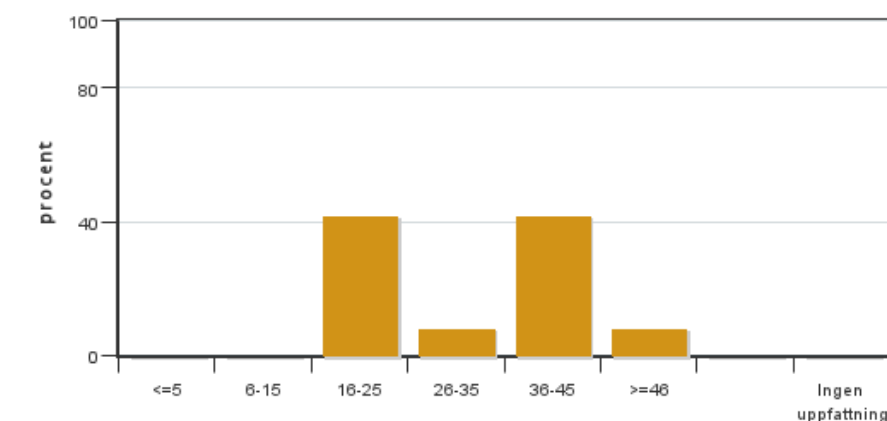


Antal svar: 12  
Medel: 3,3  
Median: 3

1: 0  
2: 2  
3: 3  
4: 5  
5: 0

Har ingen uppfattning: 2

#### 12. Jag har i genomsnitt lagt ... timmar per vecka på kursen (inklusive schemalagd tid).

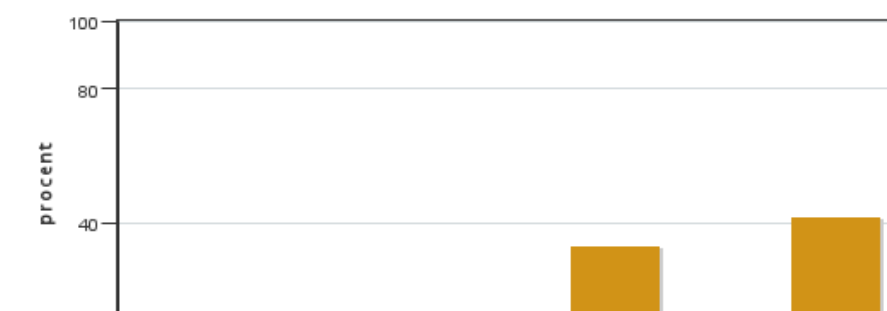


Antal svar: 12  
Medel: 31,3  
Median: 26-35

≤5: 0  
6-15: 0  
16-25: 5  
26-35: 1  
36-45: 5  
≥46: 1

Har ingen uppfattning: 0

#### 13. Om relevant, vad är ditt helhetsintryck av att hela eller delar av utbildningen genomförts på distans?



Antal svar: 12  
Medel: 4,1  
Median: 5

1: 0  
2: 1  
3: 1  
4: 1  
5: 4

Har ingen uppfattning: 5

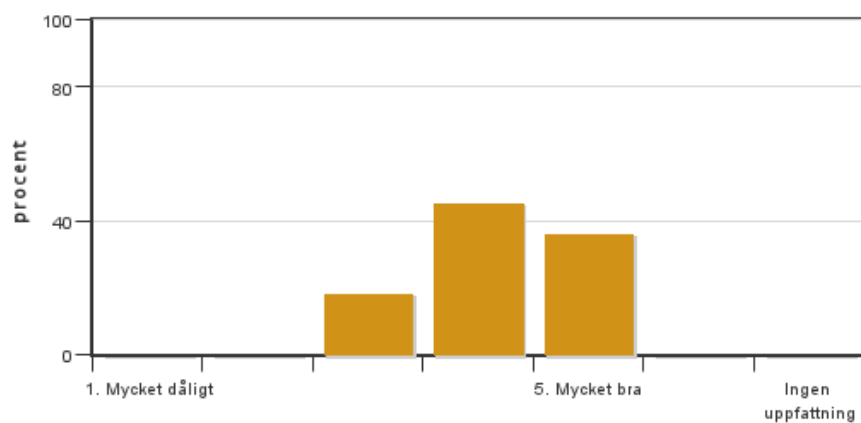


14. Om relevant, vad fungerade väl i undervisningen på distans?

15. Om relevant, vad fungerade mindre väl i undervisningen på distans?

## Egna frågor

16. Mitt helhetsintryck av kursuppgiften (assignment) är:



Antal svar: 11

Medel: 4,2

Median: 4

1: 0

2: 0

3: 2

4: 5

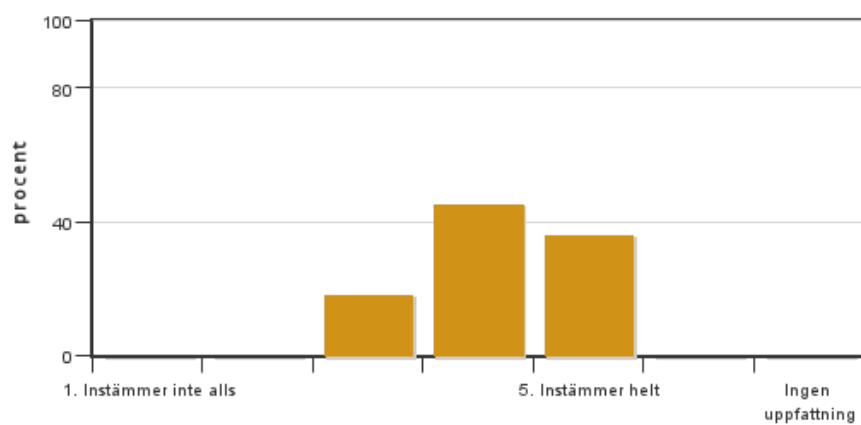
5: 4

Har ingen uppfattning: 0

17. Vad fungerade väl i kursuppgiften (assignment)?

17. Vad fungerade mindre väl i kursuppgiften (assignment)?

17. Jag anser att kursuppgiften (assignment) är en bättre form av examination än skriftlig slutexamen?



Antal svar: 11

Medel: 4,2

Median: 4

1: 0

2: 0

3: 2

4: 5

5: 4

Har ingen uppfattning: 0

## Kursledarens kommentarer

---

### Comments on evaluation and planned measures

#### **General**

This year the course was held again on-campus which was appreciated by both students and teacher staff. A total of 30 students participated which is twice as many compared to the recent few years. In line with previous years evaluations, the students evaluated the course overall with a medel/median value of 4.3/4 (good). This year we further developed the course assignment as key learning activity and replacement of the traditional final exam as the form of course evaluation. Most students evaluated this effort positively. Some areas which could be further improved are described below together with our suggested measures for the future. Since this course SG0211 will be discontinued, the measures will be considered in the topical follow-up course which is currently under development.

#### **Response rate**

For vt2022, unfortunately only 38% of students have completed the course evaluation. This low response rate is disappointing given the effort made by the course leader in reminding on and explaining the value of this course evaluation. It will be a major goal to increase the response rate in the future.

*Measure: The course leader will repeatedly stress the importance and value of the course evaluation from start to end of the course. To demonstrate that the evaluation is taken seriously, all adaptations and measures taken based on previous comments will be presented at the start of the next course. The course leader will encourage the students to complete the evaluation already by the end of the course to avoid distraction by the subsequent course work.*

#### **Educational layout and design**

Our intention was to increase the diversity in the students' learning activity by combining lectures with self-studies via reading and video material and a hands-on course assignment. We were pleased to find that both mean and median values were 4 or more for the first 10 key evaluation criteria. The one shortcoming noted by the students is the lack of female teachers in this course. We share this concern and will seek opportunities for improving this aspect in the future.

This year we further improved our course project assignment during which the students worked with empirical field data in combination with simulation models to apply and deepen their theoretical knowledge gained from the lectures and self-studies. This improvement was done based on the last year's feedback from the student course evaluation. Most beneficial was the measure to increase the available time to work on the assignment. The reports from the project assignment also replaced the final course examination which was much appreciated by the majority of the students (median = 4.3).

*Measure: We will do our best to improve the gender balance in the teacher team. We will re-evaluate the project assignment to further improve its pedagogic effectiveness.*

#### **Course content, communication and learning objectives**

After adopting the student feedback from the previous year, this year's Canvas course webpage was well received by the students and ensured good communication and information flow (medel = 4.5). The evaluation further suggests that the course content was well-linked to the learning objectives (medel = 4.6).

*Measure: We will re-evaluate the structure and organization of the Canvas course webpage for further improvements in the future.*

## Studentrepresentantens kommentarer

---

### Comments course representative:

The content of the course and its lectures were well received by most students. Having assignments instead of tests was especially appreciated with a course right before södra Sverigeresan since it was easier to fix any non-passing grades when away instead of having to take a new test when the students came back.

The assignments were sometimes hard to complete because of complicated software, especially Simile. A large portion of time was therefore taken up by troubleshooting instead of understanding the subject. More teacher assistance could help with this in the future and maybe have all the students in the same computer room so that the teacher don't have to run between different places.

There where a somewhat varied speed at which the assignments were graded but they were often graded rapidly. However, if the grades could be added to Ladok faster it would be appreciated.

---

Kontakta support: [support@slu.se](mailto:support@slu.se) - 018-67 6600