



## Marklära, hydrologi och meteorologi SG0211, 40009.1920

7.5 Hp

Studietakt = 100%

Nivå och djup = Grund

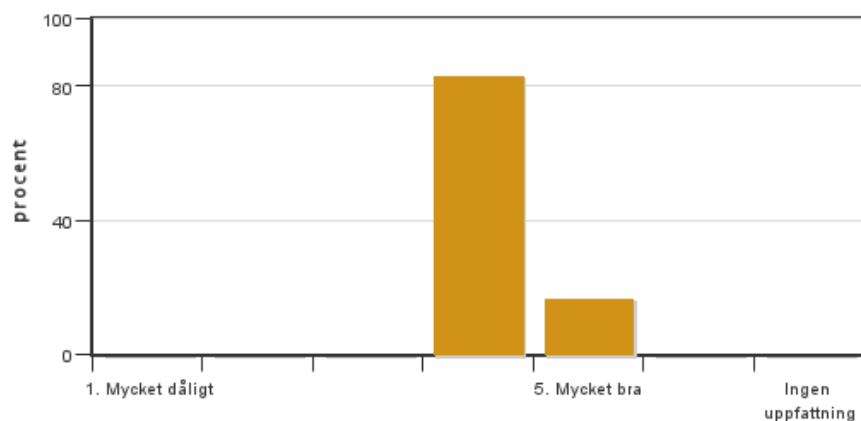
### Värderingsresultat

Värderingsperiod: 2020-04-23 - 2020-05-14

Antal svar	12
Studentantal	24
Svarsfrekvens	50 %

### Obligatoriska standardfrågor

#### 1. Mitt helhetsintryck av kursen är:

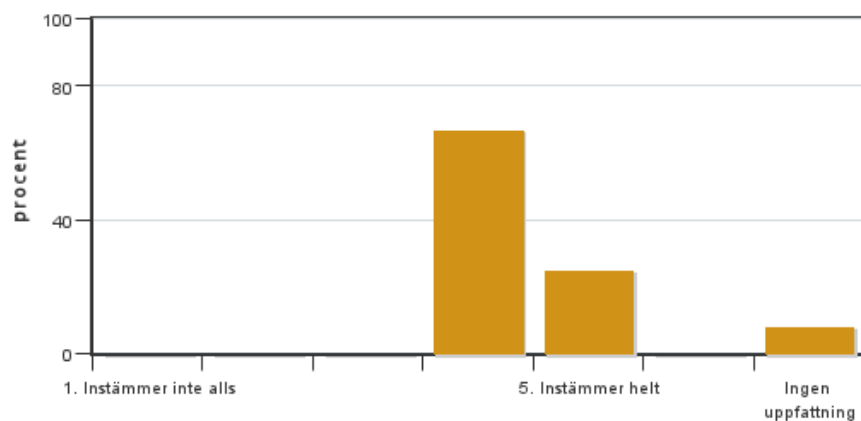


Antal svar: 12  
Medel: 4,2  
Median: 4

1: 0  
2: 0  
3: 0  
4: 10  
5: 2

Har ingen uppfattning: 0

#### 2. Jag anser att kursens innehåll hade en tydlig koppling till kursens lärandemål.

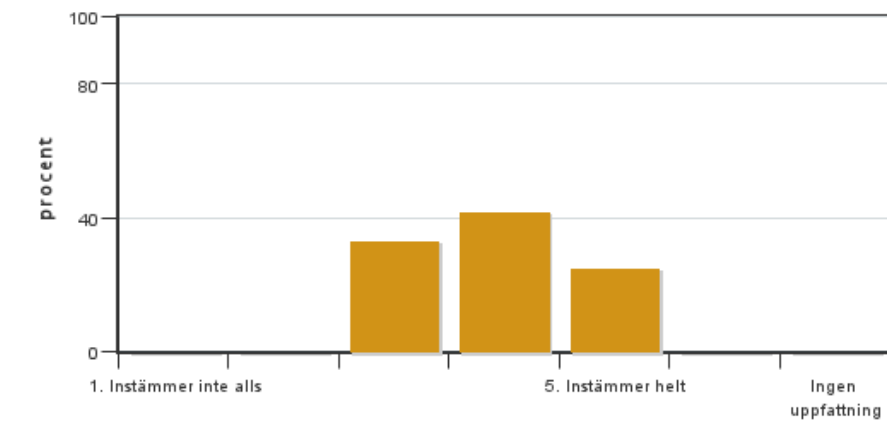


Antal svar: 12  
Medel: 4,3  
Median: 4

1: 0  
2: 0  
3: 0  
4: 8  
5: 3

Har ingen uppfattning: 1

#### 3. Mina förkunskaper var tillräckliga för att tillgodogöra mig kursen.

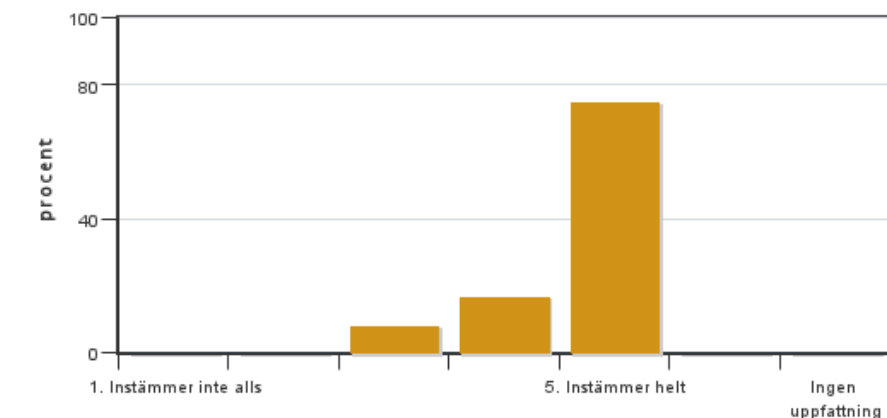


Antal svar: 12  
Medel: 3,9  
Median: 4

1: 0  
2: 0  
3: 4  
4: 5  
5: 3

Har ingen uppfattning: 0

#### 4. Jag anser att kursinformationen var lättillgänglig.

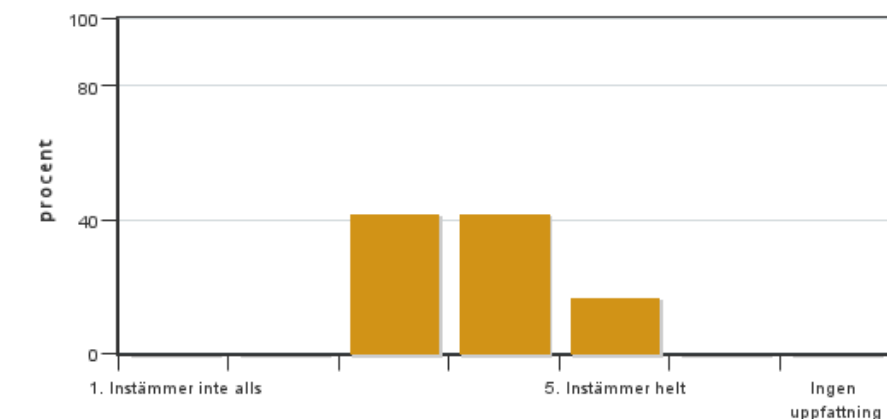


Antal svar: 12  
Medel: 4,7  
Median: 5

1: 0  
2: 0  
3: 1  
4: 2  
5: 9

Har ingen uppfattning: 0

#### 5. Kursens lärandemoment (föreläsningar, litteratur, övningar med mera) har stöttat mitt lärande.

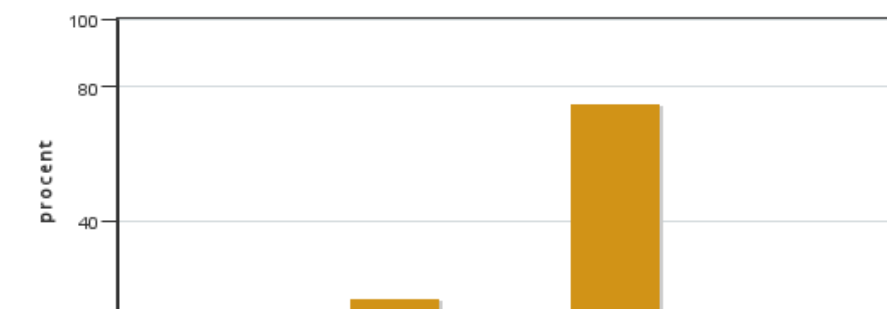


Antal svar: 12  
Medel: 3,8  
Median: 4

1: 0  
2: 0  
3: 5  
4: 5  
5: 2

Har ingen uppfattning: 0

#### 6. Jag anser att den sociala lärmiljön har varit inkluderande där olika tankar respekterades.



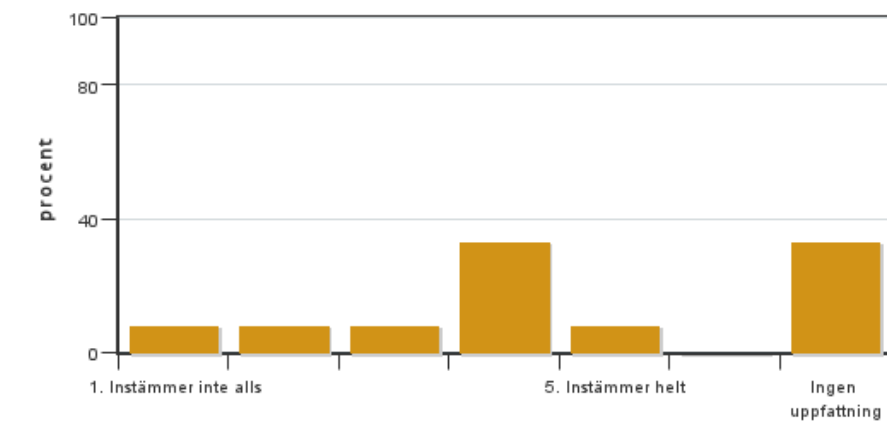
Antal svar: 12  
Medel: 4,6  
Median: 5

1: 0  
2: 0  
3: 2  
4: 1  
5: 9

Har ingen uppfattning: 0



**7. Jag anser att den fysiska lärmiljön (exempelvis lokaler och utrustning) var tillfredställande.**

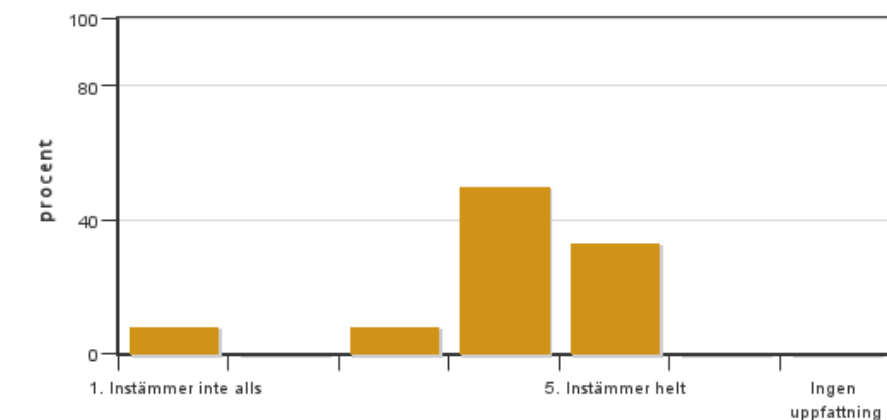


Antal svar: 12  
Medel: 3,4  
Median: 4

1: 1  
2: 1  
3: 1  
4: 4  
5: 1

Har ingen uppfattning: 4

**8. Examinationen/-erna gav mig möjlighet att visa vad jag lärt mig under kursen, se lärandemål.**

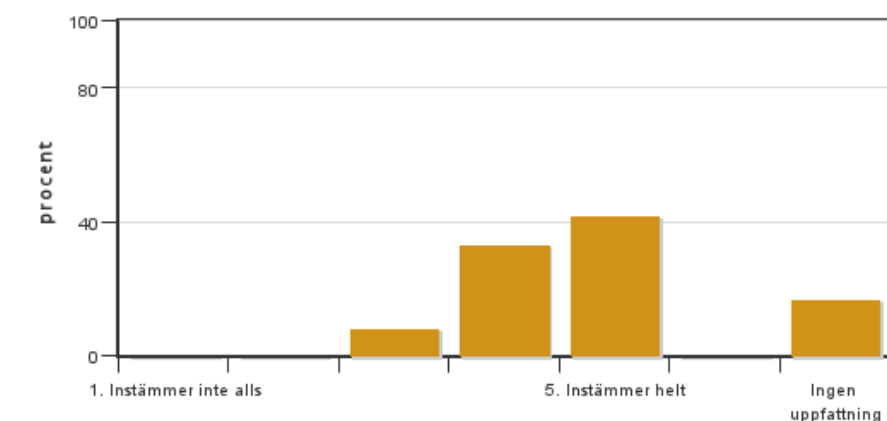


Antal svar: 12  
Medel: 4,0  
Median: 4

1: 1  
2: 0  
3: 1  
4: 6  
5: 4

Har ingen uppfattning: 0

**9. Jag anser att kursen har berört hållbar utveckling (miljömässig, social och/eller ekonomisk hållbarhet).**

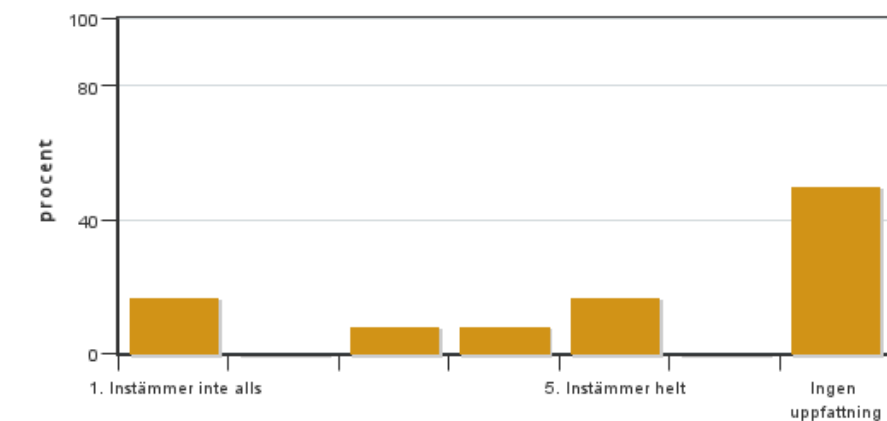


Antal svar: 12  
Medel: 4,4  
Median: 4

1: 0  
2: 0  
3: 1  
4: 4  
5: 5

Har ingen uppfattning: 2

**10. Jag anser att kursen har berört ett genus- och jämställdhetsperspektiv i innehåll och praktik (t. ex. perspektiv på ämnet, kurslitteratur, fördelning av taltid och förekomst av härskartekniker).**

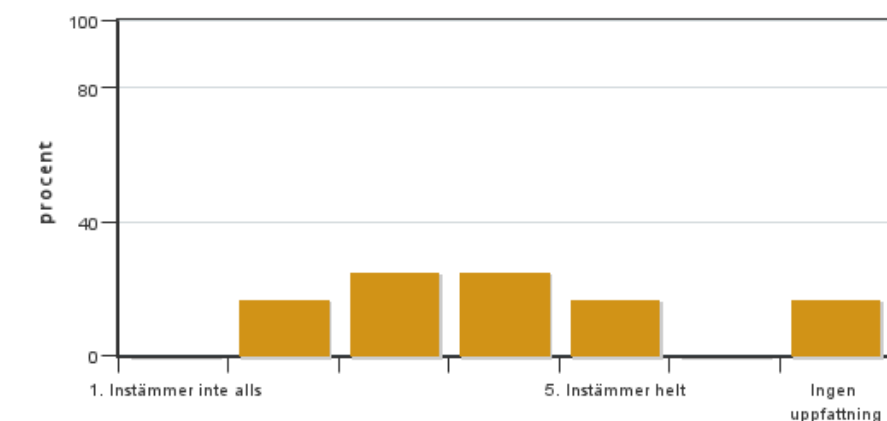


Antal svar: 12  
Medel: 3,2  
Median: 3

1: 2  
2: 0  
3: 1  
4: 1  
5: 2

Har ingen uppfattning: 6

#### 11. Jag anser att kursen har berört internationella perspektiv.

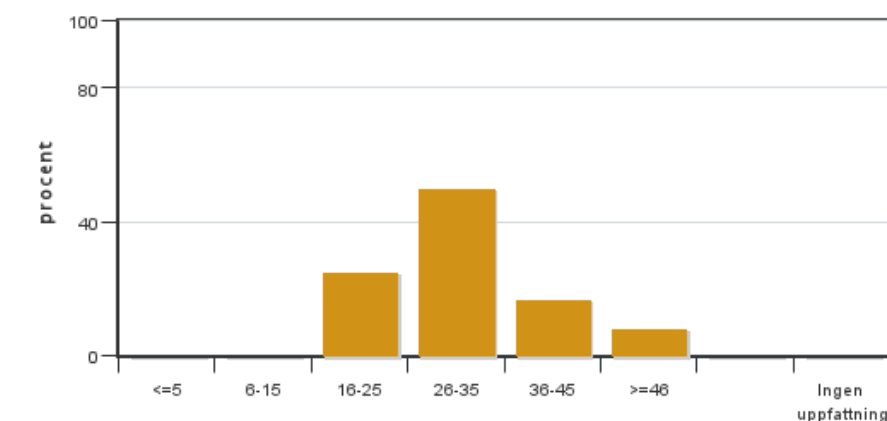


Antal svar: 12  
Medel: 3,5  
Median: 3

1: 0  
2: 2  
3: 3  
4: 3  
5: 2

Har ingen uppfattning: 2

#### 12. Jag har i genomsnitt lagt ... timmar per vecka på kursen (inklusive schemalagd tid).



Antal svar: 12  
Medel: 30,5  
Median: 26-35

≤5: 0  
6-15: 0  
16-25: 3  
26-35: 6  
36-45: 2  
≥46: 1

Har ingen uppfattning: 0

## Kursledarens kommentarer

### Comments on evaluation and planned measures

#### General

This year's course was affected by special circumstances due to the COVID-19 situation throughout vt 2020. Specifically, this resulted in the requirement for switching to distance-learning on a short notice prior to the course start. Despite these challenges, however, overall the students evaluated the course with "good (4)" to "very good (5)". Still, there are some areas where the course can be further improved. These are listed below together with our suggested measures to improve these in the future.

## **Response rate**

50% of students have completed the evaluation. This is slightly lower than the 66% obtained in the previous year. One possible reason could be that the students were saturated with time spent on the computer after several weeks of online learning and therefore were less motivated to return online to complete the evaluation. It is in any case the ambition to increase the response rate in the next year.

*Measure: The course leader will repeatedly stress the importance and value of the course evaluation from start to end of the course. To demonstrate that the evaluation is taken seriously, all adaptations and measures taken based on previous comments will be presented at the start of the next course.*

## **Educational layout and design**

Since the COVID-19 situation required the course to be held 100% via online teaching, one intention was to limit the student time spent on the computer and to increase the flexibility in their study schedule by shifting some lecture content to self-studies via reading and video material. This resulted in an increased reading load which appeared extensive to some students. We plan to re-adjust the reading load for the coming year. We will also revisit the literature to address the students' comments on specific reading materials. Online "SIG-groups" (Seminarium i Grupp) created a valuable pedagogic element for interactive discussion moments in this year's situation. For the coming year, the plan is to develop a project assignment in which students work with empirical field data and apply simple models to deepen their theoretical knowledge based on lectures and self-studies. Project assignments might also serve as the new basis for the final course examination.

*Measure: We will re-evaluate the allocation of time to self-studies versus lectures and revisit the course literature taking into account the comments from this evaluation. We will develop a new project assignment with the goal to introduce more applied elements into the course schedule.*

## **Course content, communication and learning objectives**

Adopting the recommendation from the previous year, the course had for the first time a Canvas course webpage. This has considerably improved the exchange of information, access to course material and communication with the students. However, following the students' remarks, the course leadership also recognizes the need for further improvements in the organization of the Canvas webpage structure. This includes a clearer information for defining the mandatory course elements. The evaluation (grade 4.3) suggests that the course content was well linked to the learning objectives.

*Measure: The structure and organization of the Canvas course webpage will be improved in vt2021. We will also clearly define and communicate the mandatory course elements in the schedule.*

## **Information and communication of measures**

Information on the taken measures above will be communicated via the standard channel for distributing the evaluation material (i.e. on the course webpage) and presented to the students at the beginning of the next year's course (vt2021).

## **Studentrepresentantens kommentarer**

---

The course was not given as usual because of the COVID-19 pandemic. As students, we did not have any chance to experience how the course would have been if it had been given as usual. Even though, the overall impression was that this course was very interesting, rewarding with knowledge and with good lectures. A special thanks to most of the lecturers that had put a noticeable amount of effort in learning Zoom before the course started and creating good lecture slides and exercises to make the course interesting and enjoyable even though based online.

Most students found the course literature very good. The literature for hydrology and soil chemistry was much appreciated for some students. The book we read a lot of when covering meteorology were considered as very heavy reading and for coming years, some of the reading in meteorology could perhaps be stripped down a bit. Students found that the lectures and exercises in all subjects gave the most, since they were more in line with expected knowledge. The students would have appreciated more real lectures in hydrology instead of reading almost everything in that subject.

All students also found that the examination was very well disposed. In other courses when writing the examination from home, the examination questions have been a lot more demanding than if writing the exam as usual and it has been very stressful to complete the exam on time. This course examination was possible to finish with well

formulated answers on all questions and the degree of difficulty felt like previous years exams and in line with the knowledge that we had learned from our lectures, exercises and literature.

Again, the course was very rewarding even though all students were new to online based teaching and perhaps not in the best of moods because of the pandemic situation. Most of the students believe that it would have been more fun to take the course if it could have been executed as normal, but this was of course not an option. We want to thank the lecturers for making this course interesting and rewarding and being committed even though it was based online.

---

Kontakta support: [support@slu.se](mailto:support@slu.se) - 018-67 6600