



## Växtpatologi BI1044, 10140.1819

15 Hp  
Studietakt = 100%  
Nivå och djup = Avancerad

### Värderingsresultat

---

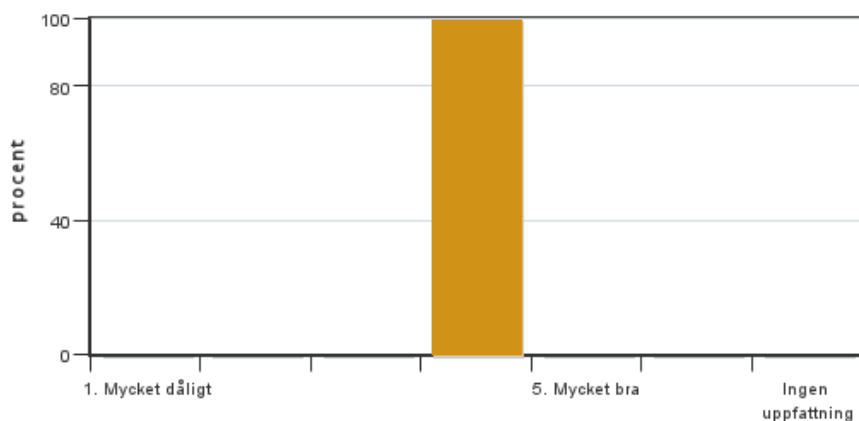
Värderingsperiod: 2018-10-29 - 2018-11-19

Antal svar 2  
Studentantal 3  
Svarsfrekvens 66 %

### Obligatoriska standardfrågor

---

#### 1. Mitt helhetsintryck av kursen är:

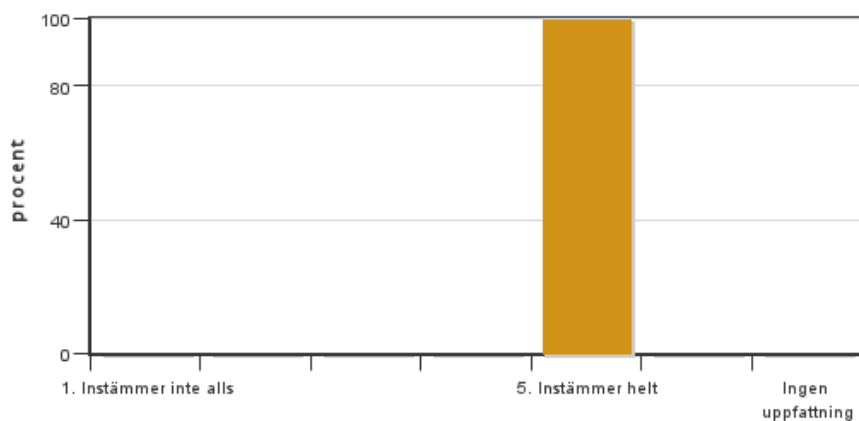


Antal svar: 2  
Medel: 4,0  
Median: 4

1: 0  
2: 0  
3: 0  
4: 2  
5: 0

Har ingen uppfattning: 0

#### 2. Jag anser att kursens innehåll hade en tydlig koppling till kursens lärandemål.

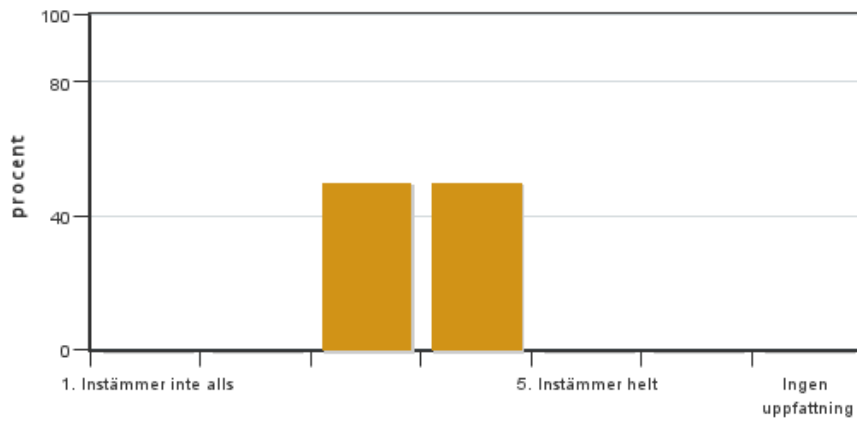


Antal svar: 2  
Medel: 5,0  
Median: 5

1: 0  
2: 0  
3: 0  
4: 0  
5: 2

Har ingen uppfattning: 0

#### 3. Mina förkunskaper var tillräckliga för att tillgodogöra mig kursen.

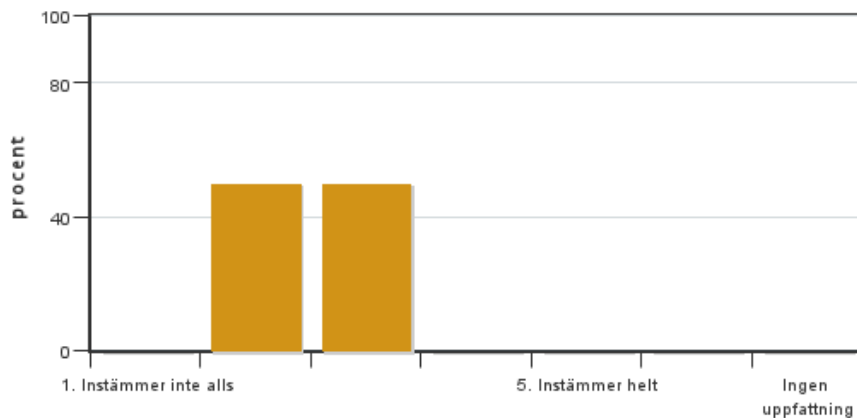


Antal svar: 2  
 Medel: 3,5  
 Median: 3

1: 0  
 2: 0  
 3: 1  
 4: 1  
 5: 0

Har ingen uppfattning: 0

**4. Jag anser att kursinformationen var lättillgänglig.**

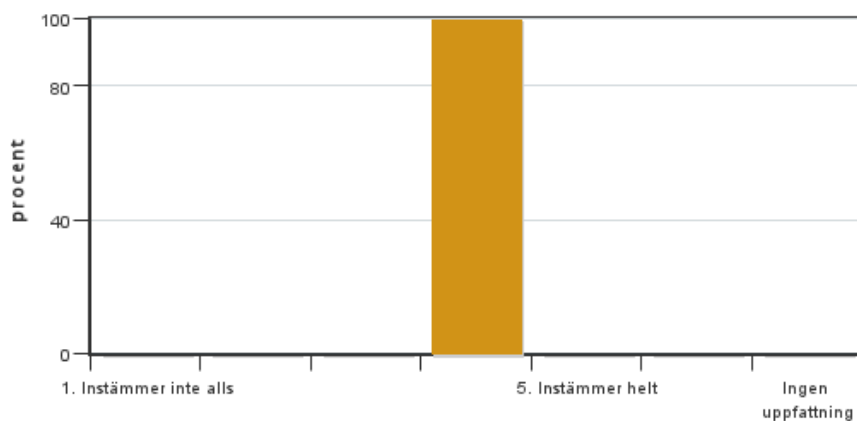


Antal svar: 2  
 Medel: 2,5  
 Median: 2

1: 0  
 2: 1  
 3: 1  
 4: 0  
 5: 0

Har ingen uppfattning: 0

**5. Kursens lärandemoment (föreläsningar, litteratur, övningar med mera) har stöttat mitt lärande.**

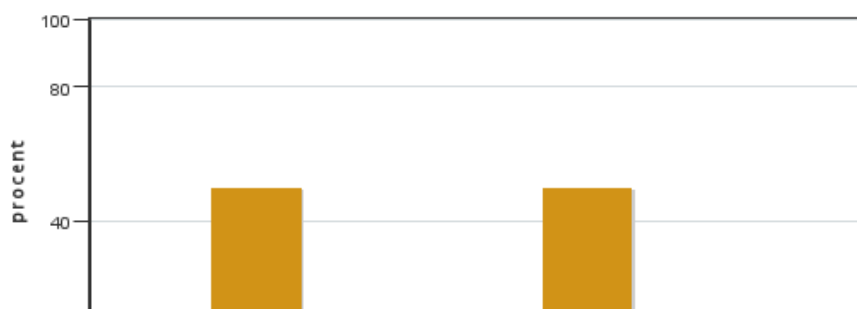


Antal svar: 2  
 Medel: 4,0  
 Median: 4

1: 0  
 2: 0  
 3: 0  
 4: 2  
 5: 0

Har ingen uppfattning: 0

**6. Jag anser att den sociala lärmiljön har varit inkluderande där olika tankar respekterades.**



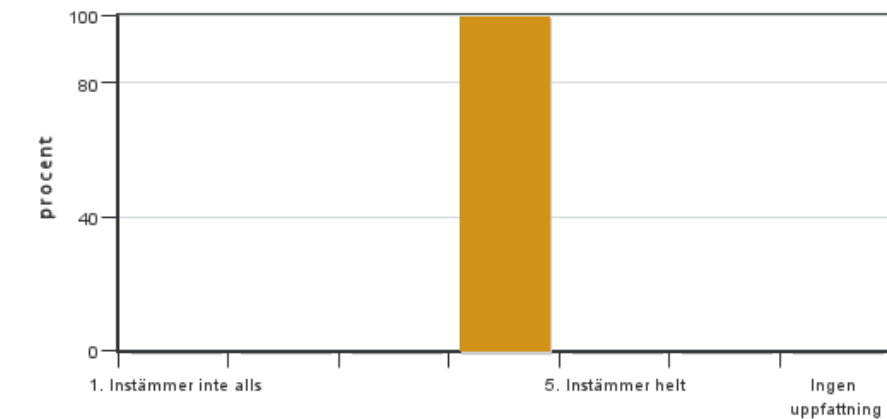
Antal svar: 2  
 Medel: 3,5  
 Median: 2

1: 0  
 2: 1  
 3: 0  
 4: 0  
 5: 1

Har ingen uppfattning: 0



7. Jag anser att den fysiska lärmiljön (exempelvis lokaler och utrustning) var tillfredställande.

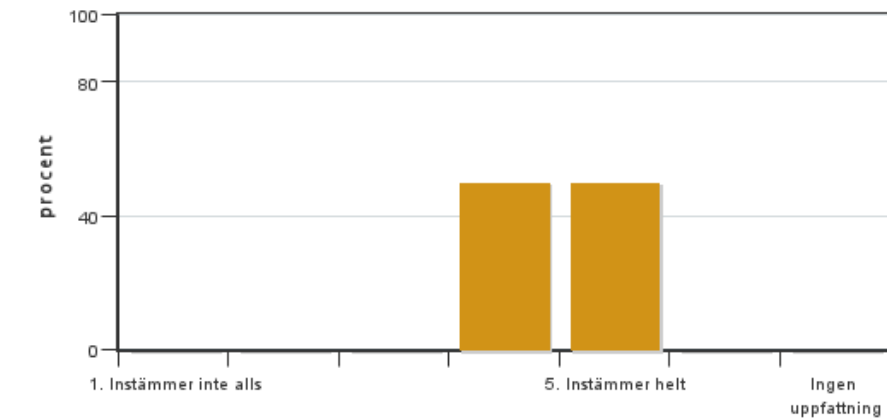


Antal svar: 2  
Medel: 4,0  
Median: 4

1: 0  
2: 0  
3: 0  
4: 2  
5: 0

Har ingen uppfattning: 0

8. Examinationen/-erna gav mig möjlighet att visa vad jag lärt mig under kursen, se lärandemål.

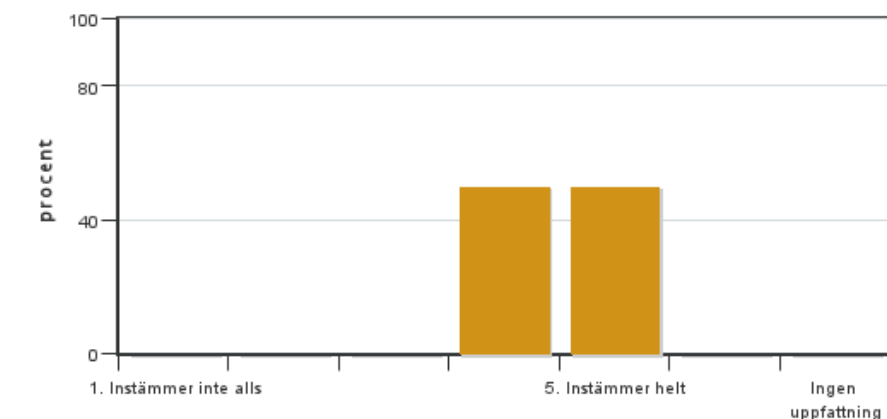


Antal svar: 2  
Medel: 4,5  
Median: 4

1: 0  
2: 0  
3: 0  
4: 1  
5: 1

Har ingen uppfattning: 0

9. Jag anser att kursen har berört hållbar utveckling (miljömässig, social och/eller ekonomisk hållbarhet).

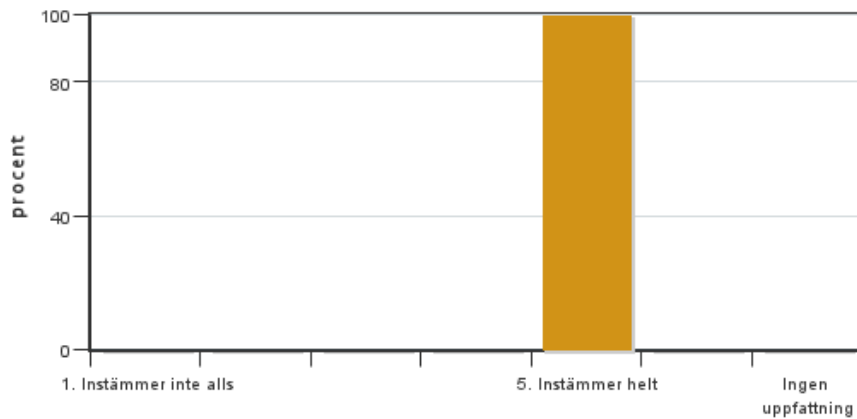


Antal svar: 2  
Medel: 4,5  
Median: 4

1: 0  
2: 0  
3: 0  
4: 1  
5: 1

Har ingen uppfattning: 0

10. Jag anser att kursen har berört ett genus- och jämställdhetsperspektiv i innehåll och praktik (t. ex. perspektiv på ämnet, kurslitteratur, fördelning av taltid och förekomst av härskartekniker).

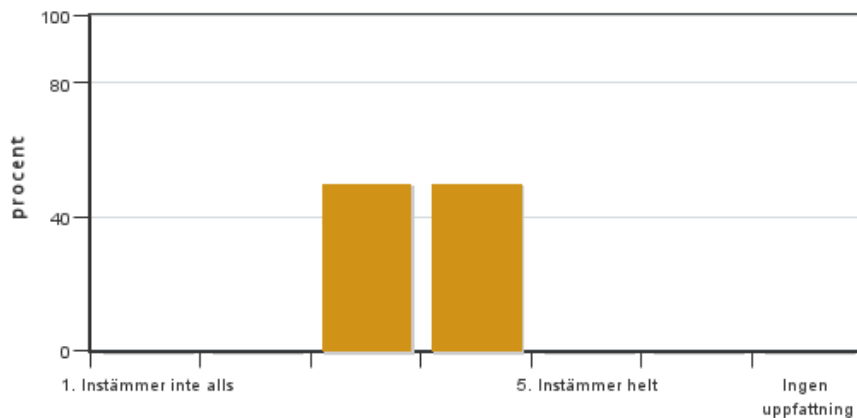


Antal svar: 2  
 Medel: 5,0  
 Median: 5

1: 0  
 2: 0  
 3: 0  
 4: 0  
 5: 2

Har ingen uppfattning: 0

**11. Jag anser att kursen har berört internationella perspektiv.**

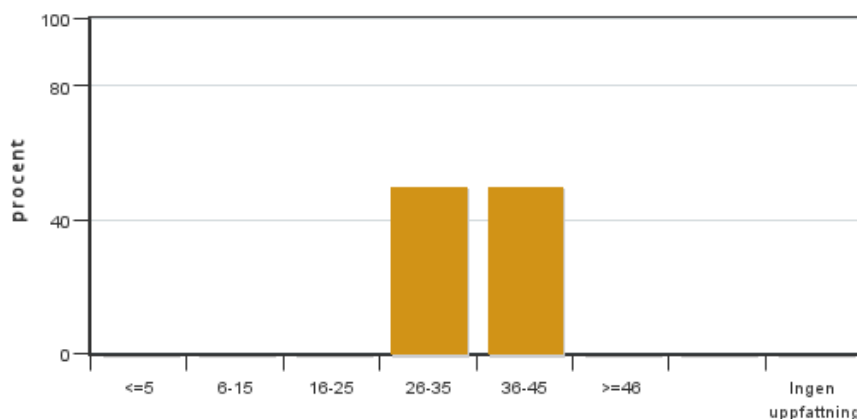


Antal svar: 2  
 Medel: 3,5  
 Median: 3

1: 0  
 2: 0  
 3: 1  
 4: 1  
 5: 0

Har ingen uppfattning: 0

**12. Jag har i genomsnitt lagt ... timmar per vecka på kursen (inklusive schemalagd tid).**



Antal svar: 2  
 Medel: 35,0  
 Median: 26-35

≤5: 0  
 6-15: 0  
 16-25: 0  
 26-35: 1  
 36-45: 1  
 ≥46: 0

Har ingen uppfattning: 0

## Egna frågor

**13.**  
 What is the best that you learnt from this course?

**13.** At the beginning of the course you probably had some expectations on it. Try to recall what they were and answer the following question: How have your expectations been fulfilled?

**13. How did you find the textbook Agrios - did you use it? - please comment**

**13. How did you find the different ways of teaching: Lectures, Theoretical exercises, Lab. exercises, excursions, exam including proceedings, postsession etc. - please comment**

## **Kursledarens kommentarer**

---

The overall evaluation is generally good and with a clear course content linked to the learning objectives. The course web site could have been opened earlier making the course information accessible before the summer holiday – that will happen next year 2019. The students were positive to the various course components and especially liked the lab exercises and the theoretical exercises although the scheduling of theoretical exercises could be adjusted in one of the weeks – we will adjust this 2019. This year was unusual due to the very dry and warm season. Thus, we only had few diseases in the fields at SLU where we had the excursion, as would have been the case in other fields at that time in 2018. This is difficult to do anything about but normally we have many diseases to show and for the diagnostic exercises in the lab. Concerning the social learning environment and respect of differences in opinion – it is difficult to comment on this as we have several teachers and ways of teaching and the student who ranked it low does not specify it as a written comment. However, we will make sure that all teachers are aware that this has been addressed aiming at future improvement. However, all in all I think we had a fine evaluation.

/Dan Funck Jensen

## **Studentrepresentantens kommentarer**

---

Overall the students had a good impression from this course. The mix of theory exercises/seminars, lectures and lab work was considered good but some suggested less theory exercises, maybe substituted with more laborations. The course contained both applied plant pathology as well as theoretical and molecular aspects, the students' different educational background and previous knowledge became useful when dealing with these different topics.

The poster project deepened the learning for a specific topic and was appreciated by all students. The practical aspect of getting to design a poster was also a good experience. The excursions were not as successful and did not add much to the learning experience, mainly due to the lack of pathogens around campus. However, excursions should still be a part of the course. The bioassays laboration was very much appreciated since the context of the laboration was made clear and the whole process of carrying out the bioassays were included.