



## Product Development and Innovation Systems in Horticulture FÖ0435, 20005.1819

15 Hp  
Studietakt = 100%  
Nivå och djup = Avancerad  
Kursledare = Sara Spendrup

### Värderingsresultat

---

Värderingsperiod: 2019-01-13 - 2019-02-03

Antal svar 0  
Studentantal 6  
Svarsfrekvens 0 %

### Obligatoriska standardfrågor

---

1. Mitt helhetsintryck av kursen är:



Antal svar:

1: 0  
2: 0  
3: 0  
4: 0  
5: 0

Har ingen uppfattning: 0

2. Jag anser att kursens innehåll hade en tydlig koppling till kursens lärandemål.

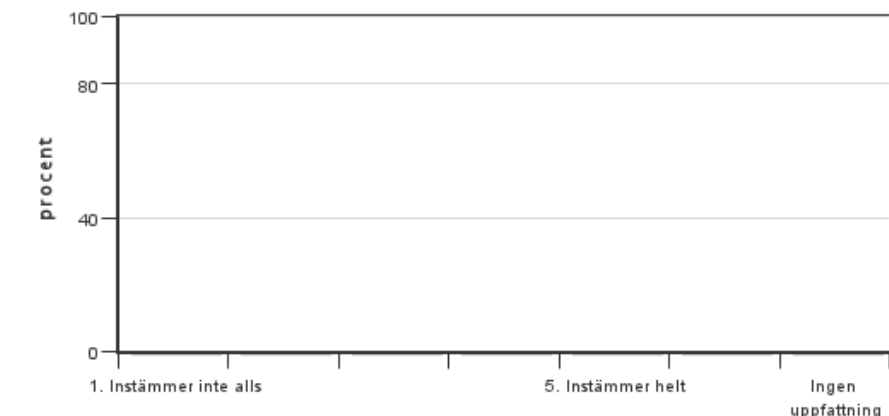


Antal svar:

1: 0  
2: 0  
3: 0  
4: 0  
5: 0

Har ingen uppfattning: 0

**3. Mina förkunskaper var tillräckliga för att tillgodogöra mig kursen.**

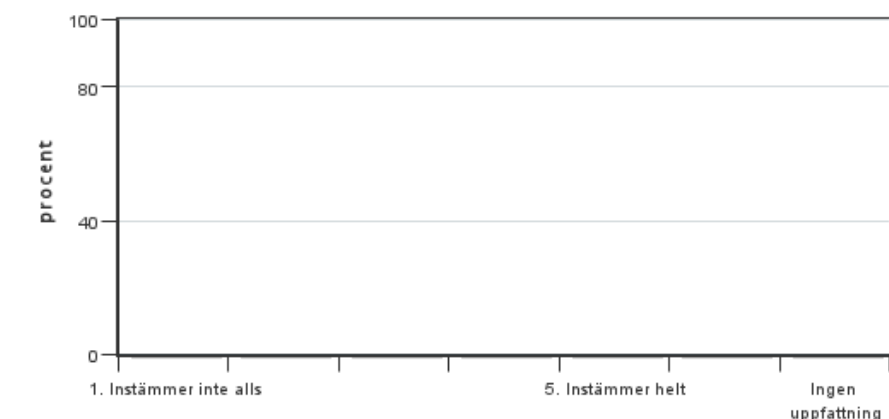


Antal svar:

- 1: 0
- 2: 0
- 3: 0
- 4: 0
- 5: 0

Har ingen uppfattning: 0

**4. Jag anser att kursinformationen var lättillgänglig.**

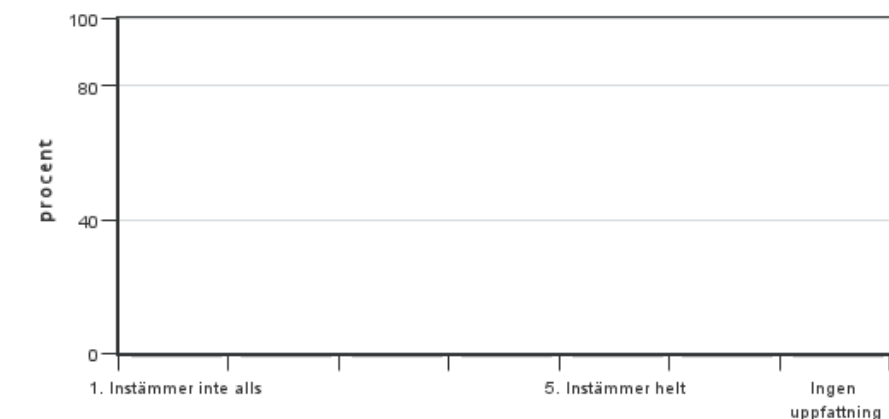


Antal svar:

- 1: 0
- 2: 0
- 3: 0
- 4: 0
- 5: 0

Har ingen uppfattning: 0

**5. Kursens lärandemoment (föreläsningar, litteratur, övningar med mera) har stöttat mitt lärande.**



Antal svar:

- 1: 0
- 2: 0
- 3: 0
- 4: 0
- 5: 0

Har ingen uppfattning: 0

**6. Jag anser att den sociala lärmiljön har varit inkluderande där olika tankar respekterades.**



Antal svar:

- 1: 0
- 2: 0
- 3: 0
- 4: 0
- 5: 0

Har ingen uppfattning: 0



**7. Jag anser att den fysiska lärmiljön (exempelvis lokaler och utrustning) var tillfredställande.**



Antal svar:

1: 0

2: 0

3: 0

4: 0

5: 0

Har ingen uppfattning: 0

**8. Examinationen/-erna gav mig möjlighet att visa vad jag lärt mig under kursen, se lärandemål.**



Antal svar:

1: 0

2: 0

3: 0

4: 0

5: 0

Har ingen uppfattning: 0

**9. Jag anser att kursen har berört hållbar utveckling (miljömässig, social och/eller ekonomisk hållbarhet).**



Antal svar:

1: 0

2: 0

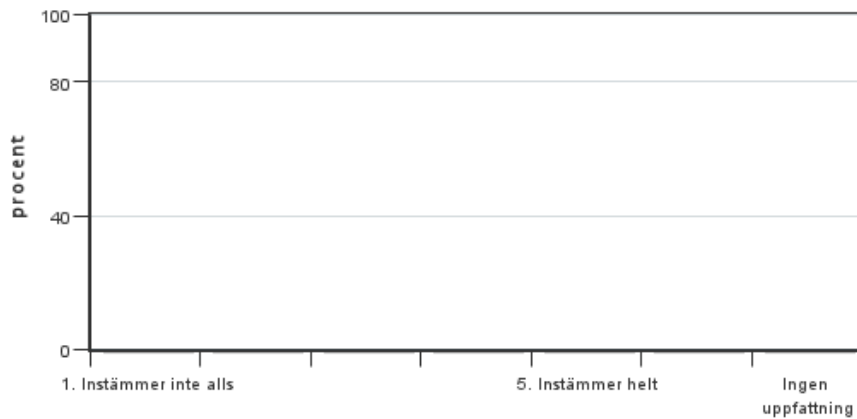
3: 0

4: 0

5: 0

Har ingen uppfattning: 0

**10. Jag anser att kursen har berört ett genus- och jämställdhetsperspektiv i innehåll och praktik (t. ex. perspektiv på ämnet, kurslitteratur, fördelning av taltid och förekomst av härskartekniker).**



Antal svar:

1: 0

2: 0

3: 0

4: 0

5: 0

Har ingen uppfattning: 0

### 11. Jag anser att kursen har berört internationella perspektiv.



Antal svar:

1: 0

2: 0

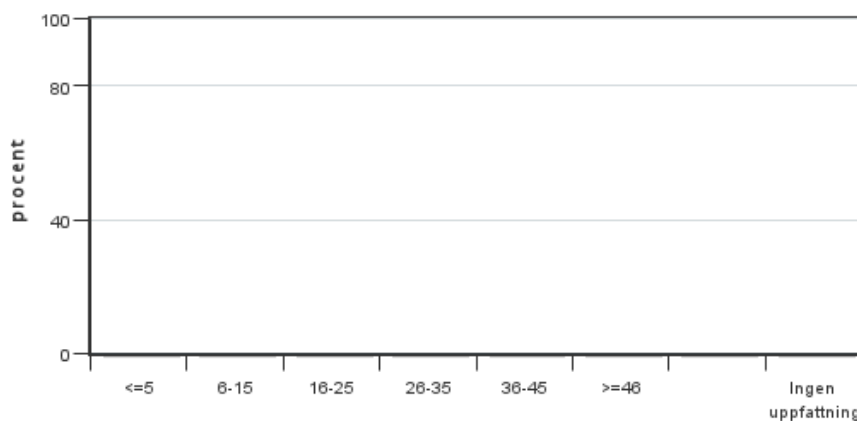
3: 0

4: 0

5: 0

Har ingen uppfattning: 0

### 12. Jag har i genomsnitt lagt ... timmar per vecka på kursen (inklusive schemalagd tid).



Antal svar:

≤5: 0

6-15: 0

16-25: 0

26-35: 0

36-45: 0

≥46: 0

Har ingen uppfattning: 0

## Kursledarens kommentarer

Due to an answering frequency of 0% I connect my comments to the oral course evaluation that was performed in class January 15th 2019.

The students appreciated very much the exercise "the mini-review" and this will thus be kept for next year. We will additionally develop the cases included further and add additional material. We will also look in to the possibility of increasing the inter-disciplinary parts of the course.

The field trips were much appreciated, however we will place some of them later in the course and also connect relevant assignments or cases connected to them.

Within the teacher team we will also work on developing the instructions connected to included exercises.

## Studentrepresentantens kommentarer

---

The reason for the low answering frequency (0%) was that none of the students received the evaluation form. The following comments are based on my dialog with the other students.

Generally the course was appreciated. The concept of having a new project/subject each week with a oral or written presentation in the end of the week worked good. The study visits were also appreciated.

Some improvements can be done. Regarding the study visits, they could be scheduled later in the course. In that way the students will have more background knowledge which will let them get more out of the study visits. It would also be good to connect the study visits to a assignment/project during the course.

The course contents were perceived as broad and sometimes very abstract. A lot of concepts/models were studied, but it could be hard to understand how those are applied. A more concrete approach would be appreciated. Maybe include more case studies or utilise the study visits for this purpose.

Lastly, it was experienced that it took too long time to get the feedback and grades on assignments. The feedback from assignments are important for the student to be able to improve. If they come too late, the chances for improving on the next assignments are lost.

---

Kontakta support: [support@slu.se](mailto:support@slu.se) - 018-67 6600