



Horticultural Systems and Future Challenges BI1309, 10018.1819

15 Hp

Studietakt = 100%

Nivå och djup = Avancerad

Kursledare = Lars Mogren

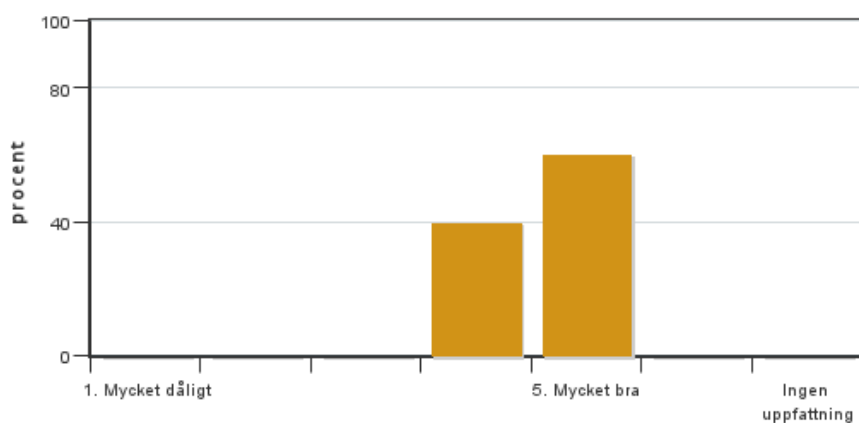
Värderingsresultat

Värderingsperiod: 2018-10-29 - 2018-11-19

Antal svar	5
Studentantal	6
Svarsfrekvens	83 %

Obligatoriska standardfrågor

1. Mitt helhetsintryck av kursen är:

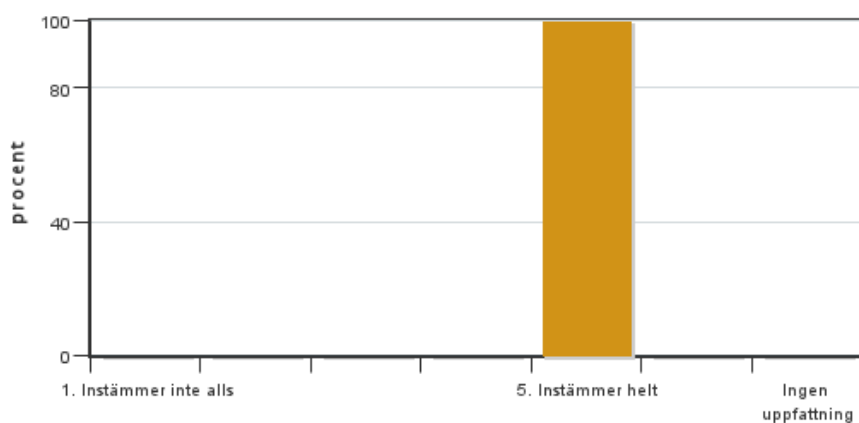


Antal svar: 5
Medel: 4,6
Median: 5

1: 0
2: 0
3: 0
4: 2
5: 3

Har ingen uppfattning: 0

2. Jag anser att kursens innehåll hade en tydlig koppling till kursens lärandemål.

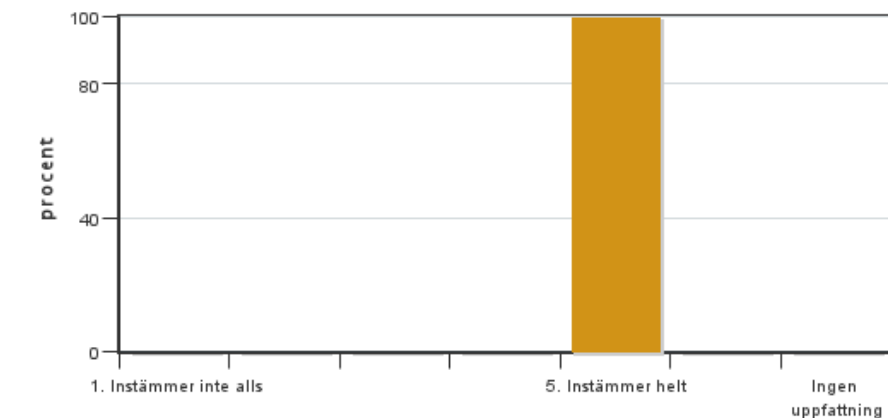


Antal svar: 5
Medel: 5,0
Median: 5

1: 0
2: 0
3: 0
4: 0
5: 5

Har ingen uppfattning: 0

3. Mina förkunskaper var tillräckliga för att tillgodogöra mig kursen.

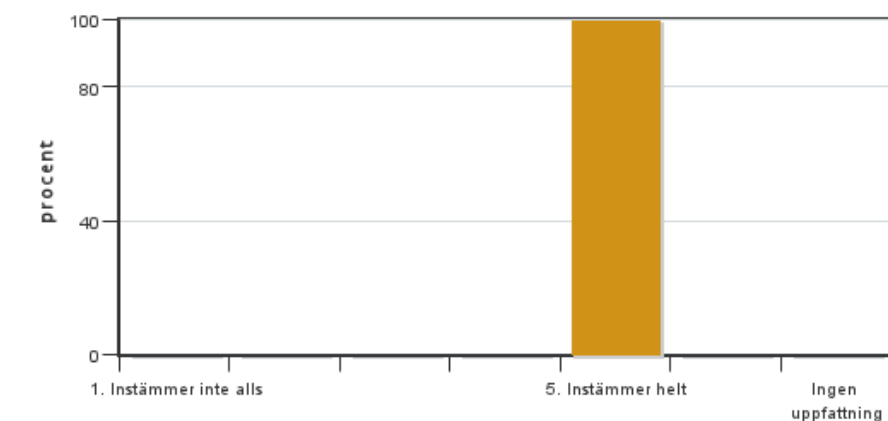


Antal svar: 5
Medel: 5,0
Median: 5

1: 0
2: 0
3: 0
4: 0
5: 5

Har ingen uppfattning: 0

4. Jag anser att kursinformationen var lättillgänglig.

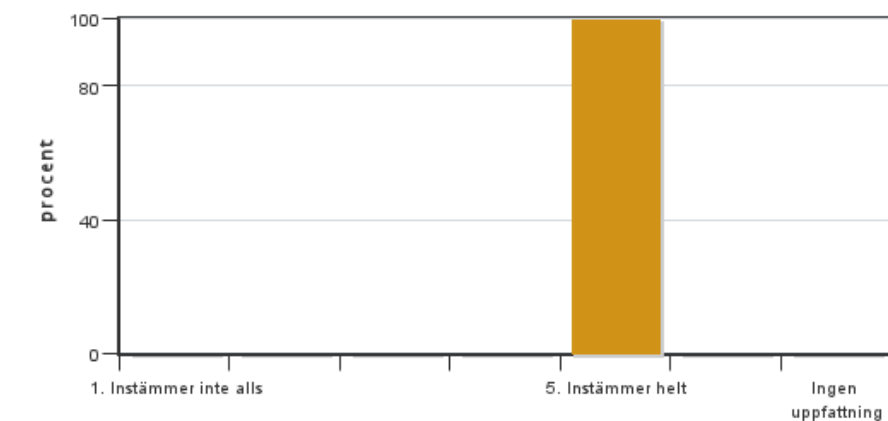


Antal svar: 5
Medel: 5,0
Median: 5

1: 0
2: 0
3: 0
4: 0
5: 5

Har ingen uppfattning: 0

5. Kursens lärandemoment (föreläsningar, litteratur, övningar med mera) har stöttat mitt lärande.

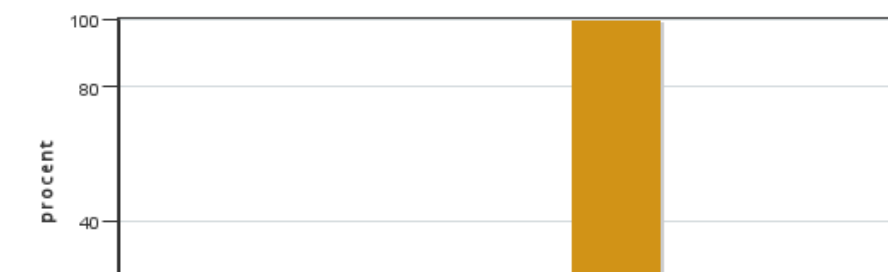


Antal svar: 5
Medel: 5,0
Median: 5

1: 0
2: 0
3: 0
4: 0
5: 5

Har ingen uppfattning: 0

6. Jag anser att den sociala lärmiljön har varit inkluderande där olika tankar respekterades.



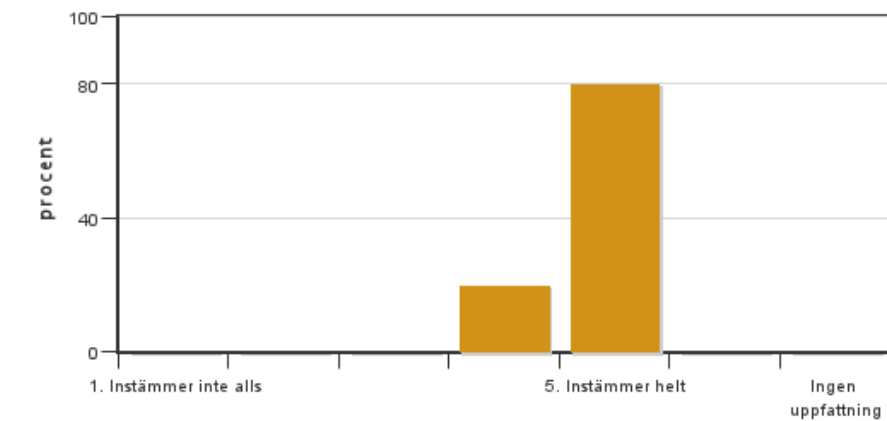
Antal svar: 5
Medel: 5,0
Median: 5

1: 0
2: 0
3: 0
4: 0
5: 5



Har ingen uppfattning: 0

7. Jag anser att den fysiska lärmiljön (exempelvis lokaler och utrustning) var tillfredställande.



Antal svar: 5

Medel: 4,8

Median: 5

1: 0

2: 0

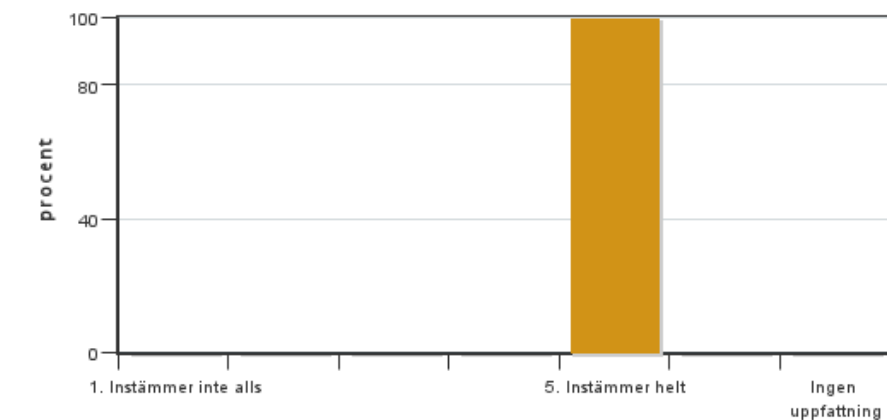
3: 0

4: 1

5: 4

Har ingen uppfattning: 0

8. Examinationen/-erna gav mig möjlighet att visa vad jag lärt mig under kursen, se lärandemål.



Antal svar: 5

Medel: 5,0

Median: 5

1: 0

2: 0

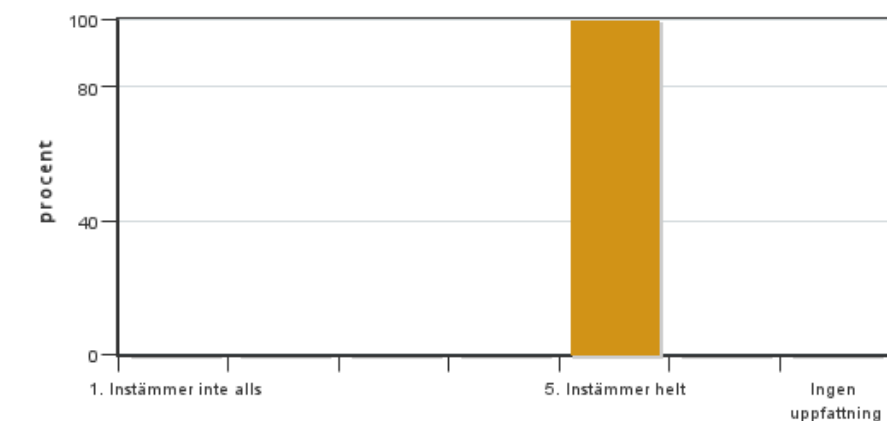
3: 0

4: 0

5: 5

Har ingen uppfattning: 0

9. Jag anser att kursen har berört hållbar utveckling (miljömässig, social och/eller ekonomisk hållbarhet).



Antal svar: 5

Medel: 5,0

Median: 5

1: 0

2: 0

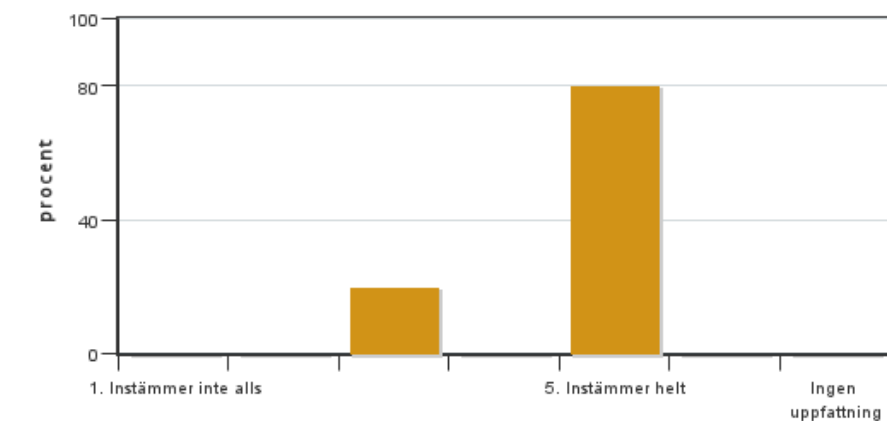
3: 0

4: 0

5: 5

Har ingen uppfattning: 0

10. Jag anser att kursen har berört ett genus- och jämställdhetsperspektiv i innehåll och praktik (t. ex. perspektiv på ämnet, kurslitteratur, fördelning av taltid och förekomst av härskartekniker).

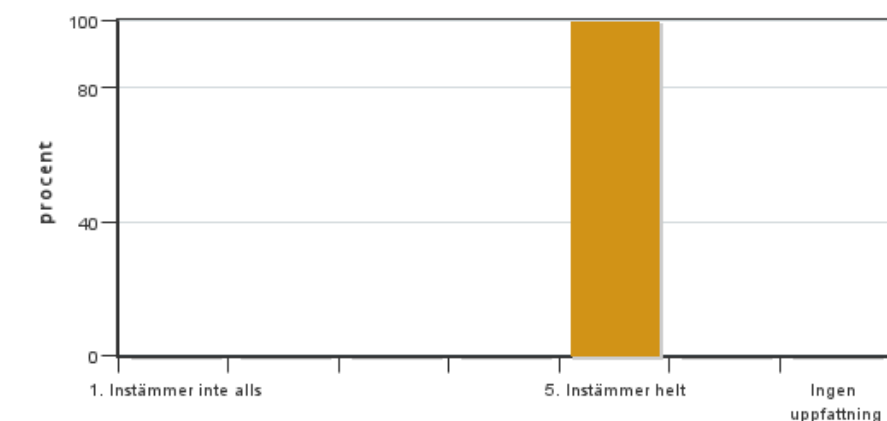


Antal svar: 5
Medel: 4,6
Median: 5

1: 0
2: 0
3: 1
4: 0
5: 4

Har ingen uppfattning: 0

11. Jag anser att kursen har berört internationella perspektiv.

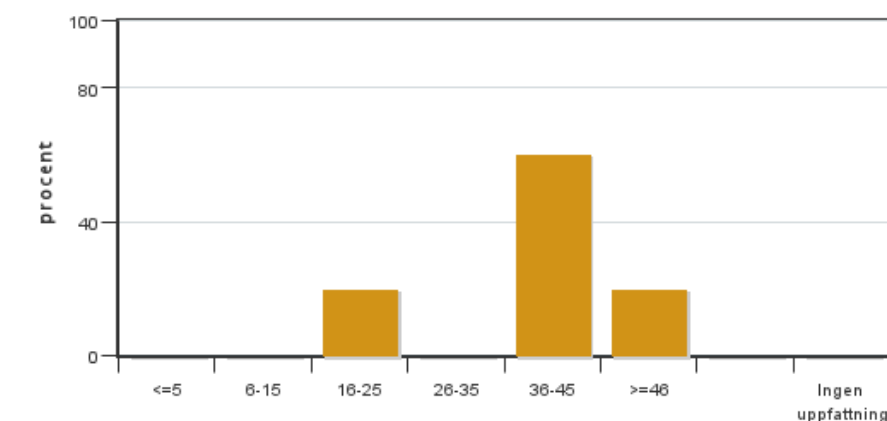


Antal svar: 5
Medel: 5,0
Median: 5

1: 0
2: 0
3: 0
4: 0
5: 5

Har ingen uppfattning: 0

12. Jag har i genomsnitt lagt ... timmar per vecka på kursen (inklusive schemalagd tid).



Antal svar: 5
Medel: 37,2
Median: 36-45

≤5: 0
6-15: 0
16-25: 1
26-35: 0
36-45: 3
≥46: 1

Har ingen uppfattning: 0

Kursledarens kommentarer

This was the first time the course was given, so there is no previous year evaluation to compare with.

It seems like the students did like the one-week one-theme structure of the course, so that will be kept and improved for next year.

It was a challenge to involve 5 departments in one course, but it seems the students enjoyed the variation. There will be a teacher follow up meeting and there will be more focus on between-lectureres-communication.

For next year there will be more focus on feed-back and evaluation of each week/module.

Studentrepresentantens kommentarer

Horticultural Systems and Future Challenges

Application code = SLU-10018

Course code = BI1309

Course period = 3 Sep - 5 Nov 2018

- The course covered the horticulture topics: Plant physiology, Horticultural challenges, Agroforestry, Ethics, climate change effects on food security and quality, storage diseases and food waste, Global perspective of the biobased circular economy, an introduction of horticulture's breeding, Future challenges for plant protection supporting with practical on *Drosophila Suzukii* laying eggs in the lab, Taxonomic overview and Invasive species, value chain, Global perspective - countries and culture, Ecological plant production - mining restoration, plant propagation and very interesting excursion to the relative producers and marketing organizations adding more richness to the course literature.

The course literature materials were sufficient and rich to achieve the goals.

- Assignments at each end of the week make students think carefully and review the week literature and explore their all relative ideas to present correctly and cover the goals of regular weekly lectures with a high support from the teachers and especially from the course leader who was a great active and support respectable person.

- Table time was clear and easy to access showing the lecture titles and places and cover the time for student sufficiently.

- Approved literature was :

Science and the garden - the scientific basis of horticultural practice

David S. Ingram, Daphne Vince-Prue, Peter J. Gregory

ISBN13: 9781118778432

3rd ed (2015)

I think it covers the demands to make the students understand lectures during the course.

- Syllabus preferred to be more than 2 months because it is essential for the master degree to go deeper in horticulture challenges.

I think it was a very good course. It covered a broad range of subjects, which is difficult to fit in in a single course, but I think it succeeded. Especially worth was that we got to meet researchers, visit companies and institutions which were active in different areas of research and business. In the course, we had several lecturers, which each were responsible for different segments of the course. In that way, we got to know many researchers and lecturers of the university. I think that is a good set-up for an introductory course to a program, especially when (as in this case) most students were new to the university.

However, during the course, we had one assignment each week, which could be a written report or an oral presentation, or both. But never during the whole course were we given any formal feedback on any of the assignments. As a student, I think that makes it hard to know how to improve. Also, when it's time to get the final grading, it is difficult to know how you performed in relation to the grading criteria. I think feedback is a central part in developing skills so this needs to be improved.

Also, a drawback from the set-up of a number of different lecturers is that the course can become scattered and unstructured. I think that the communication between the different lecturers needs to improve. Both so that each have a good idea of what has been taught in the course and what is the overall objectives, and how the students attending the course perform. Then the lecturer can know what to emphasize in the coming assignments and adjust them accordingly. I know that it is difficult when jamming together a course that broad in subjects, and I think it worked reasonably well, but I also think there is room for improvement.

Hani Elaamer

Kontakta support: support@slu.se - 018-67 6600