



GIS and Geographic Analysis TN0329, 20140.1516

15 Hp
Studietakt = 100%
Nivå och djup = Avancerad
Kursledare = Anders Larssolle

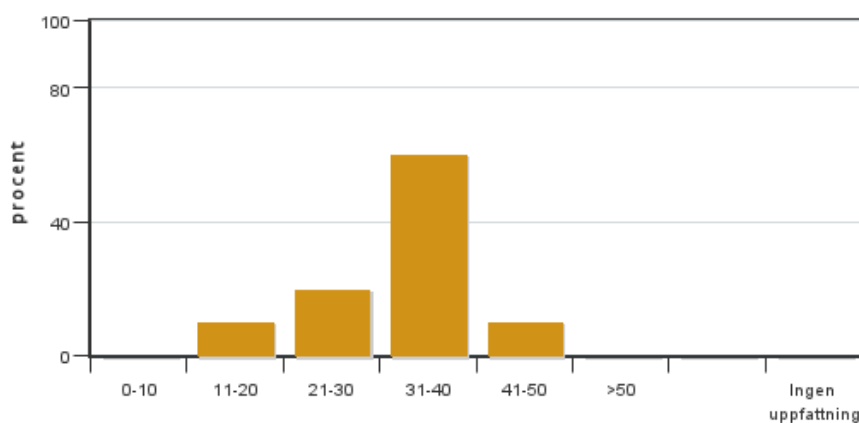
Värderingsresultat

Värderingsperiod: 2016-01-12 - 2016-01-29

Antal svar 10
Studentantal 34
Svarsfrekvens 29 %

Obligatoriska standardfrågor

1. Hur många timmar per vecka har du i genomsnitt lagt ner på kursen (inklusive schemalagd tid)?

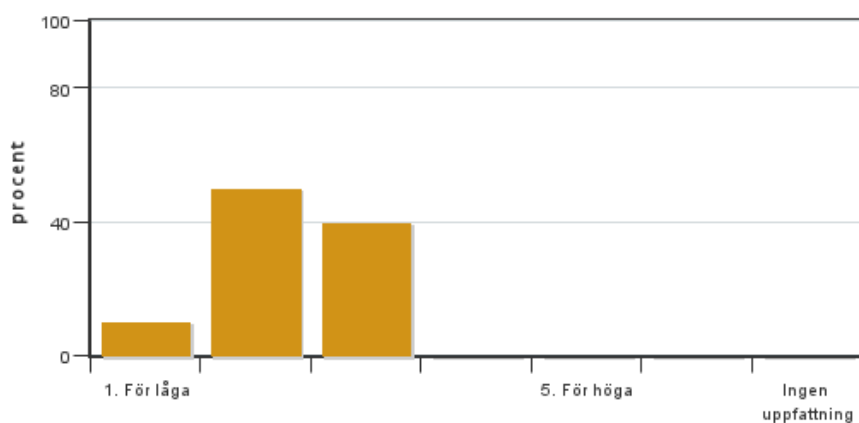


Antal svar: 10
Medel: 32,0
Median: 31-40

0-10: 0
11-20: 1
21-30: 2
31-40: 6
41-50: 1
>50: 0

Har ingen uppfattning: 0

2. Vad anser du om dina förkunskaper inför kursen?

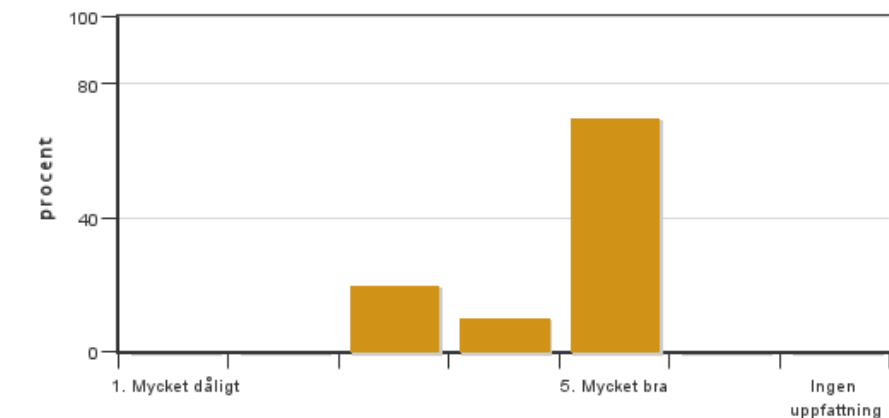


Antal svar: 10
Medel: 2,3
Median: 2

1: 1
2: 5
3: 4
4: 0
5: 0

Har ingen uppfattning: 0

3. Hur har informationen/administrationen i samband med kursen fungerat?

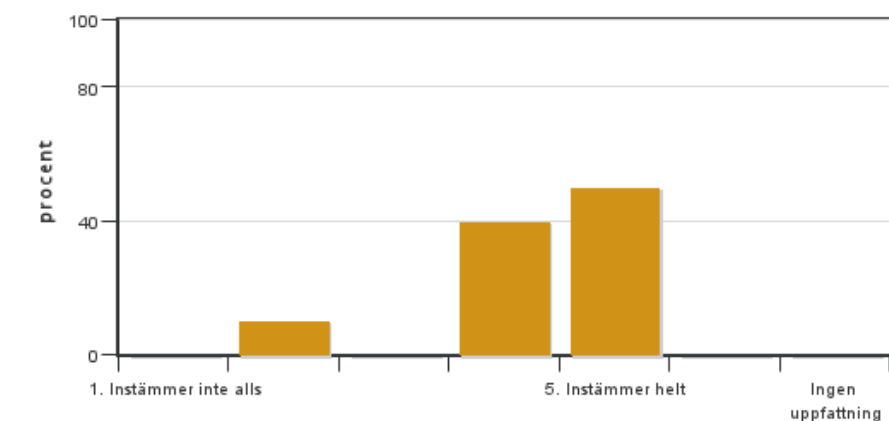


Antal svar: 10
Medel: 4,5
Median: 5

1: 0
2: 0
3: 2
4: 1
5: 7

Har ingen uppfattning: 0

4. Jag anser att helhetsintrycket av kursen är mycket gott

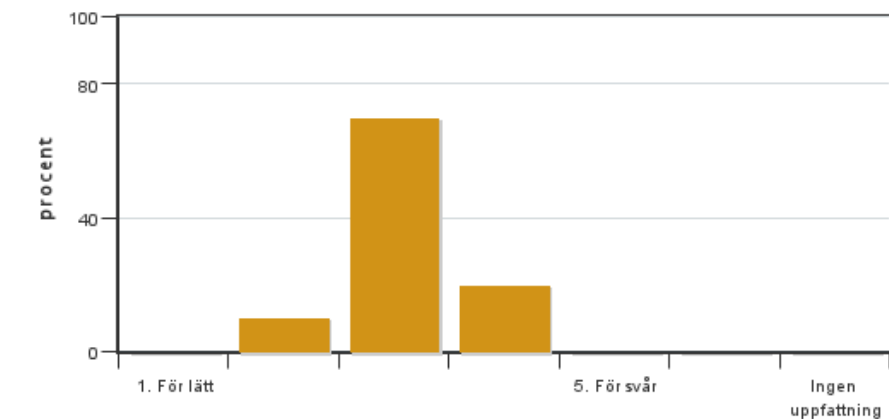


Antal svar: 10
Medel: 4,3
Median: 4

1: 0
2: 1
3: 0
4: 4
5: 5

Har ingen uppfattning: 0

5. Jag anser att kursens svårighetsgrad har varit

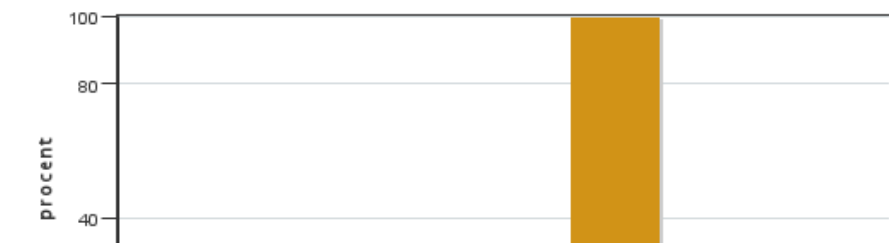


Antal svar: 10
Medel: 3,1
Median: 3

1: 0
2: 1
3: 7
4: 2
5: 0

Har ingen uppfattning: 0

6. Jag anser att kursen har behandlat alla lärandemål som anges i kursplanen. Om Du markerar (1), (2), (3), eller (4) ange vilket/vilka lärandemål som blivit otillräckligt behandlade.



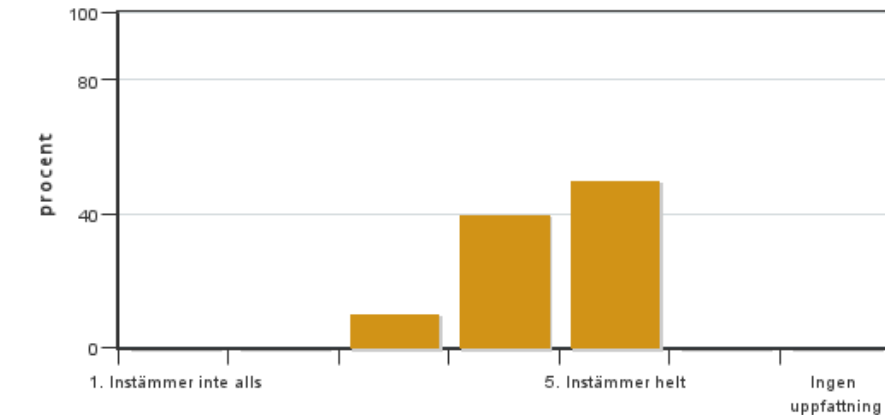
Antal svar: 10
Medel: 5,0
Median: 5

1: 0
2: 0
3: 0
4: 0



5: 10
Har ingen uppfattning: 0

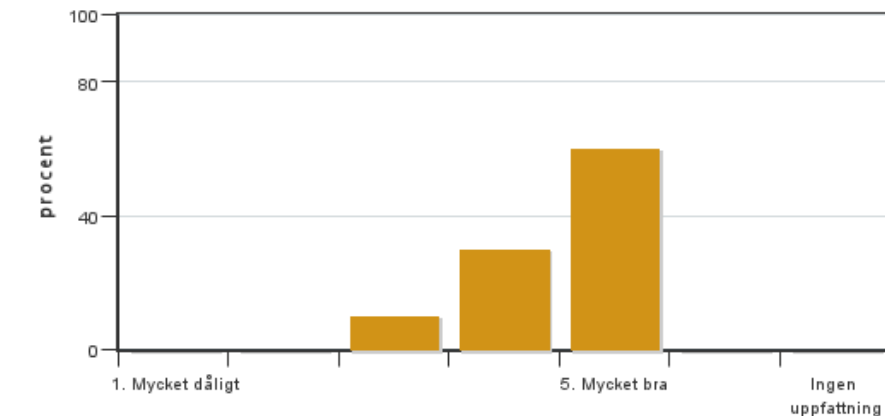
7. Betygskriterierna var tydligt formulerade och enkla att förstå



Antal svar: 10
Medel: 4,4
Median: 4

1: 0
2: 0
3: 1
4: 4
5: 5
Har ingen uppfattning: 0

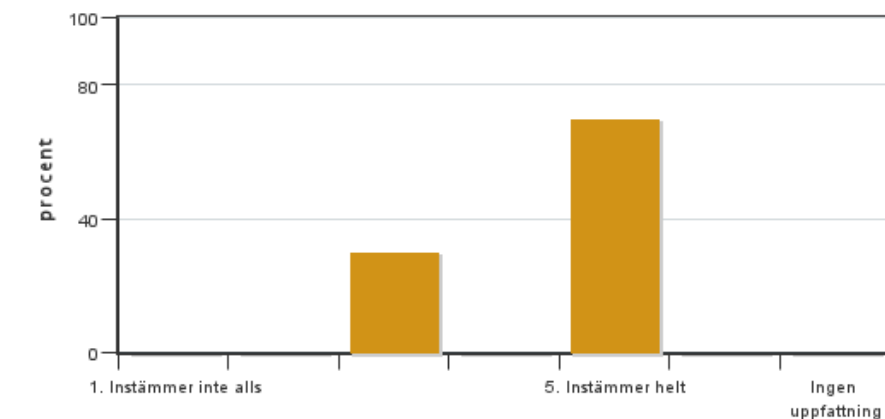
8. Jag anser att diskussionsklimatet under kursen har varit bra.



Antal svar: 10
Medel: 4,5
Median: 5

1: 0
2: 0
3: 1
4: 3
5: 6
Har ingen uppfattning: 0

9. Jag anser att nödvändig infrastruktur kring undervisningen som lokaler och utrustning har fungerat ändamålsenligt.



Antal svar: 10
Medel: 4,4
Median: 5

1: 0
2: 0
3: 3
4: 0
5: 7
Har ingen uppfattning: 0

Kursledarens kommentarer

1. Kommentera alla de fritextkommentarer som känns relevanta i utvärderingsrapporten -- både bra och dåliga.

Första gången vi ger denna kurs med helt nytt kursupplägg. Fortfarande lite experimentellt, och därför mycket viktigt att ta del av studenternas respons via kursvärderingen. Mycket positiva värderingsresultat, men en del ändringar skall göras till nästa kurstillfälle: 1. Obligatorisk närvaro vid föreläsningar kommer att införas, där vi försäkrar oss om att samtliga kursdeltagare får del av kursens teoriinnehåll. 2. Detta teoriinnehåll tenteras sedan av med en skriftlig tentamen. 3. Examinationskriterierna förtydligas.

2. SLU har ett övergripande mål att "Öka kunskapen om hållbar utveckling och hållbart nyttjande av naturresurser hos våra studenter". Kommentera nedan hur du anser att kursen har bidragit till kursdeltagarnas kunskaper om hållbar utveckling och hållbart nyttjande av naturresurser.

GIS är den perfekta plattformen för att hantera frågor rörande hållbar utveckling och hållbart nyttjande av naturresurser, och de flesta av våra studentprojekt handlar faktiskt om dessa frågor. Jag gissar att vi ligger i topp vad gäller kursens aktualitet i dessa frågor.

Studentrepresentantens kommentarer

1. Kommentera alla de fritextkommentarer som känns relevanta i utvärderingsrapporten -- både bra och dåliga.

GIS AND GEOGRAPHIC ANALYSIS HT 2015 EVALUATION SUMMARY

The students of the GIS and Geographic Analysis course are generally happy with the personal exercises from ESRI as it is mostly the factor why they are saying it is a good course. Generally people has no background of GIS, but there are who has done the basic module year 2 from LARK Alnarp. Even people that have not been in touch with GIS at all previously said that they are happy and able to follow. They are mostly really satisfied with its flexibility with the time and the variety of courses that we can use in the program. It also provides very big range of possibility what to learn.

Students are also compliment Anders for being always available at any time and any day in assisting the students. Some find the instructions in Module A that were provided by the course and not by ESRI were very good as it is personal and reality based. Most modules were very good, but some feel that it would need for more repetition for the absorption of knowledge as most learnt it from scratch. Some suggested an exam at the end of the course, probably a smaller exam instead of the more advanced modules. There are some landscape architecture students that find the lack of direct connection of the exercises with landscape architecture. Although some are wondering whether they will be able to use it in the future, there are some who actually using GIS at their new job.

Project

The project needs a bit more improvement. As there are different level of knowledge in GIS, sometimes the work was made by the one who knew how to solve the problems with the GIS and it was more time efficient for the whole group. It resulted in that not everyone learned basic skills to do a real-life project. It was also a challenge to think of a good project that could be solved with the help of GIS when you have never used GIS before, and even after finishing the introductory part. Some would like to have more determined supervisory occasions during the project work

The administration of the course

There has been little messy to understand how many courses you should have done to achieve different grades, it might be good if you look over the wording a little or emphasize more. The instructions for the project work as we got out just over a week before the Christmas break, we should have been immediately when the project work began. At the beginning of the project, there were confusions. it was difficult to know how the final product of the project would look like due to the lack of technical information of how would the outcome, how many pages, ETC.

Infrastructure

IT is good that there were adequate amount of computer for people to use and the computer rooms are always available. Most of the time the computer and the software works fine. There were some occasion where the computers were very slow that it is even hard to just log in. There are also some computer in the computer room that doesn't have the program. There were also times where the ESRI just didn't respond.

2. This course enables student to find solution to environmentally related problems, to be more resource efficient. some people only think about the problem, but GIS actually provides the tool to solve it.

Kontakta support: support@slu.se - 018-67 6600